



**INTERNATIONAL  
GEMOLOGICAL  
INSTITUTE**

**ELECTRONIC COPY**

**LABORATORY GROWN DIAMOND REPORT**

February 10, 2026  
 IGI Report Number **LG771606793**  
 Description **LABORATORY GROWN DIAMOND**  
 Shape and Cutting Style **OVAL MODIFIED BRILLIANT**  
 Measurements **7.07 X 4.88 X 3.35 MM**

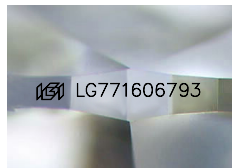
**GRADING RESULTS**

Carat Weight **0.87 CARAT**  
 Color Grade **FANCY INTENSE BLUE GREEN**  
 Clarity Grade **VS 2**

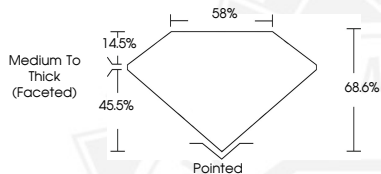
**ADDITIONAL GRADING INFORMATION**

Polish **EXCELLENT**  
 Symmetry **EXCELLENT**  
 Fluorescence **VERY SLIGHT**  
 Inscription(s) **IGI LG771606793**

Comments: This Laboratory Grown Diamond was created by High Pressure High Temperature (HPHT) growth process. Indications of post-growth treatment.



Sample Image Used



February 10, 2026  
 IGI Report Number **LG771606793**  
 OVAL MODIFIED BRILLIANT  
 LABORATORY GROWN DIAMOND  
 7.07 X 4.88 X 3.35 MM  
 Carat Weight **0.87 CARAT**  
 Color Grade **FANCY INTENSE BLUE GREEN**  
 Clarity Grade **VS 2**  
 Polish **EXCELLENT**  
 Symmetry **EXCELLENT**  
 Fluorescence **VERY SLIGHT**  
 Inscription(s) **IGI LG771606793**

Comments: This Laboratory Grown Diamond was created by High Pressure High Temperature (HPHT) growth process. Indications of post-growth treatment.



February 10, 2026  
 IGI Report Number **LG771606793**  
 OVAL MODIFIED BRILLIANT  
 LABORATORY GROWN DIAMOND  
 7.07 X 4.88 X 3.35 MM  
 Carat Weight **0.87 CARAT**  
 Color Grade **FANCY INTENSE BLUE GREEN**  
 Clarity Grade **VS 2**  
 Polish **EXCELLENT**  
 Symmetry **EXCELLENT**  
 Fluorescence **VERY SLIGHT**  
 Inscription(s) **IGI LG771606793**

Comments: This Laboratory Grown Diamond was created by High Pressure High Temperature (HPHT) growth process. Indications of post-growth treatment.



THIS DOCUMENT WAS PRODUCED WITH THE FOLLOWING SECURITY MEASURES: SPECIAL DOCUMENT PAPER, INK SCREENS, WATERMARK, BACKGROUND DESIGNS, HOLOGRAM AND OTHER SECURITY FEATURES NOT LISTED AND DO EXCEED DOCUMENT SECURITY INDUSTRY GUIDELINES.

For terms & conditions and to verify this report, please visit [www.igi.org](http://www.igi.org)