



**ELECTRONIC COPY**

LG771602761  
Report verification at igi.org



February 6, 2026

IGI Report Number **LG771602761**

Description **LABORATORY GROWN DIAMOND**

Shape and Cutting Style **ROUND BRILLIANT**

Measurements **7.29 - 7.32 X 4.50 MM**

**GRADING RESULTS**

Carat Weight **1.50 CARAT**

Color Grade **E**

Clarity Grade **VS 1**

Cut Grade **EXCELLENT**

February 6, 2026  
IGI Report Number **LG771602761**  
Description **LABORATORY GROWN DIAMOND**  
Shape and Cutting Style **ROUND BRILLIANT**  
Measurements **7.29 - 7.32 X 4.50 MM**

**GRADING RESULTS**

Carat Weight **1.50 CARAT**

Color Grade **E**

Clarity Grade **VS 1**

Cut Grade **EXCELLENT**

**ADDITIONAL GRADING INFORMATION**

Polish **EXCELLENT**

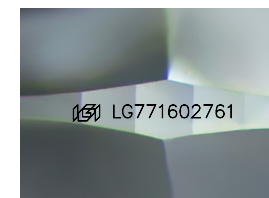
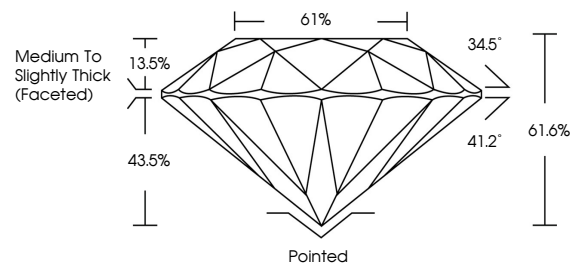
Symmetry **EXCELLENT**

Fluorescence **NONE**

Inscription(s) **IGI LG771602761**

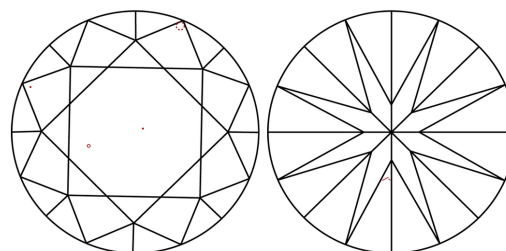
Comments: HEARTS & ARROWS  
This Laboratory Grown Diamond was created by  
Chemical Vapor Deposition (CVD) growth process.  
Type IIa

**PROPORTIONS**



Sample Image Used

**CLARITY CHARACTERISTICS**



**KEY TO SYMBOLS**

Red symbols indicate internal characteristics.  
Green symbols indicate external characteristics.

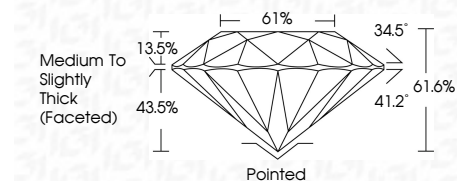


**COLOR**

D E F G H I J Faint Very Light Light

**CLARITY**

FL	IF	VS <sup>1-2</sup>	VS <sup>1-2</sup>	SI <sup>1-2</sup>	I <sup>1-3</sup>
Flawless	Internally Flawless	Very Very Slightly Included	Very Slightly Included	Slightly Included	Included



**ADDITIONAL GRADING INFORMATION**

Polish **EXCELLENT**

Symmetry **EXCELLENT**

Fluorescence **NONE**

Inscription(s) **IGI LG771602761**

Comments: HEARTS & ARROWS  
This Laboratory Grown Diamond was created by  
Chemical Vapor Deposition (CVD) growth process.  
Type IIa



**IGI**



February 6, 2026  
IGI Report No LG771602761  
**ROUND BRILLIANT**  
7.29 - 7.32 X 4.50 MM  
1.50 CARAT  
E  
VS 1  
EXCELLENT  
61.6%  
61%  
Medium To Slightly Thick (Faceted)  
Pointed  
EXCELLENT  
EXCELLENT  
NONE  
IGI LG771602761  
Comments: HEARTS & ARROWS  
This Laboratory Grown Diamond was created by Chemical Vapor Deposition (CVD) growth process.  
Type IIa