



ELECTRONIC COPY

LG771602197
Report verification at igi.org



February 4, 2026

IGI Report Number **LG771602197**

Description **LABORATORY GROWN DIAMOND**

Shape and Cutting Style **PRINCESS CUT**

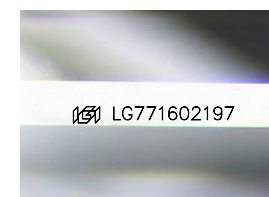
Measurements **6.32 X 6.30 X 4.57 MM**

GRADING RESULTS

Carat Weight **1.55 CARAT**

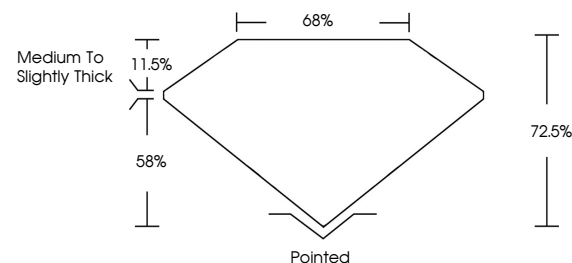
Color Grade **E**

Clarity Grade **VVS 2**

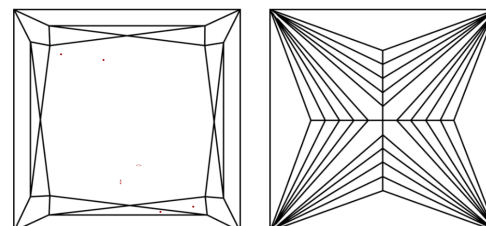


Sample Image Used

PROPORTIONS



CLARITY CHARACTERISTICS



KEY TO SYMBOLS

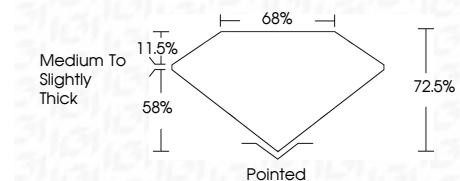
Red symbols indicate internal characteristics.
Green symbols indicate external characteristics.

COLOR

D E F G H I J Faint Very Light Light

CLARITY

FL	IF	VS ¹⁻²	VS ¹⁻²	SI ¹⁻²	I ¹⁻³
Flawless	Internally Flawless	Very Very Slightly Included	Very Slightly Included	Slightly Included	Included



ADDITIONAL GRADING INFORMATION

Polish **EXCELLENT**

Symmetry **EXCELLENT**

Fluorescence **NONE**

Inscription(s) **IGI LG771602197**

Comments: This Laboratory Grown Diamond was created by Chemical Vapor Deposition (CVD) growth process. Type IIa



IGI

February 4, 2026
IGI Report No LG771602197
PRINCESS CUT
6.32 X 6.30 X 4.57 MM
Carat Weight **1.55 CARAT**
Color Grade **E**
Clarity Grade **VVS 2**
Depth **58%**
Table **11.5%**
Girdle **Medium to Slightly Thick**
Culet **Pointed**
Polish **EXCELLENT**
Symmetry **EXCELLENT**
Fluorescence **NONE**
Inscription(s) **IGI LG771602197**

Comments: This Laboratory Grown Diamond was created by Chemical Vapor Deposition (CVD) growth process. Type IIa