



**ELECTRONIC COPY**

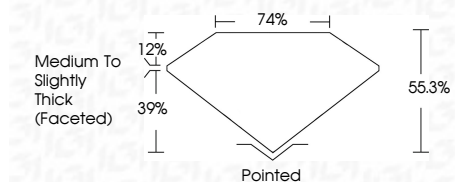
LG770699400  
Report verification at igi.org



February 4, 2026  
IGI Report Number **LG770699400**  
Description **LABORATORY GROWN DIAMOND**  
Shape and Cutting Style **MODIFIED PIE MIXED CUT**  
Measurements **8.42 X 6.11 X 3.38 MM**

**GRADING RESULTS**

Carat Weight **1.17 CARAT**  
Color Grade **F**  
Clarity Grade **VS 1**



**ADDITIONAL GRADING INFORMATION**

Polish **VERY GOOD**  
Symmetry **VERY GOOD**  
Fluorescence **NONE**  
Inscription(s) **(IGI) LG770699400**  
Comments: This Laboratory Grown Diamond was created by Chemical Vapor Deposition (CVD) growth process. Type IIa



February 4, 2026  
IGI Report No **LG770699400**  
**MODIFIED PIE MIXED CUT**  
8.42 X 6.11 X 3.38 MM  
1.17 CARAT  
F  
VS 1  
55.3%  
74%  
Medium to Slightly Thick (Faceted)  
Pointed  
Polish **VERY GOOD**  
Symmetry **VERY GOOD**  
Fluorescence **NONE**  
Inscription(s) **(IGI) LG770699400**  
Comments: This Laboratory Grown Diamond was created by Chemical Vapor Deposition (CVD) growth process. Type IIa

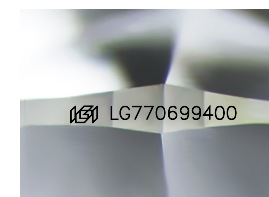
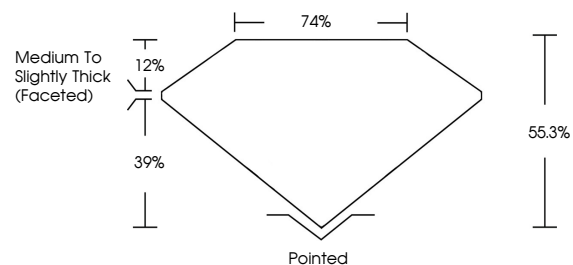
February 4, 2026  
IGI Report Number **LG770699400**  
Description **LABORATORY GROWN DIAMOND**  
Shape and Cutting Style **MODIFIED PIE MIXED CUT**  
Measurements **8.42 X 6.11 X 3.38 MM**  
**GRADING RESULTS**  
Carat Weight **1.17 CARAT**  
Color Grade **F**  
Clarity Grade **VS 1**

**ADDITIONAL GRADING INFORMATION**

Polish **VERY GOOD**  
Symmetry **VERY GOOD**  
Fluorescence **NONE**  
Inscription(s) **(IGI) LG770699400**

Comments: This Laboratory Grown Diamond was created by Chemical Vapor Deposition (CVD) growth process. Type IIa

**PROPORTIONS**



Sample Image Used

**COLOR**

D E F G H I J Faint Very Light Light

**CLARITY**

FL	IF	VS <sup>1-2</sup>	VS <sup>1-2</sup>	SI <sup>1-2</sup>	I <sup>1-3</sup>
Flawless	Internally Flawless	Very Very Slightly Included	Very Slightly Included	Slightly Included	Included

