



ELECTRONIC COPY

LABORATORY GROWN DIAMOND REPORT

February 10, 2026  
IGI Report Number LG770699370  
Description LABORATORY GROWN DIAMOND  
Shape and Cutting Style CUT CORNERED RECTANGULAR MIXED CUT  
Measurements 7.83 X 5.56 X 3.99 MM

GRADING RESULTS

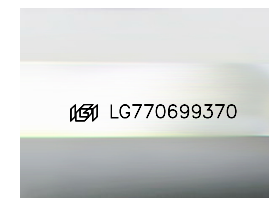
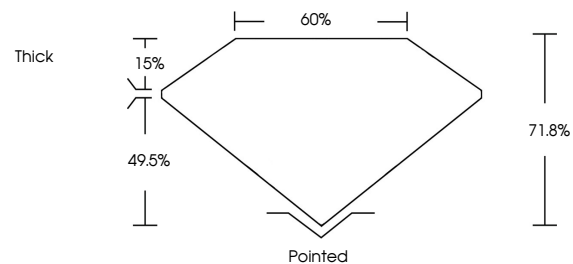
Carat Weight 1.70 CARAT  
Color Grade FANCY INTENSE YELLOW  
Clarity Grade VS 1

ADDITIONAL GRADING INFORMATION

Polish EXCELLENT  
Symmetry EXCELLENT  
Fluorescence NONE  
Inscription(s) LG770699370

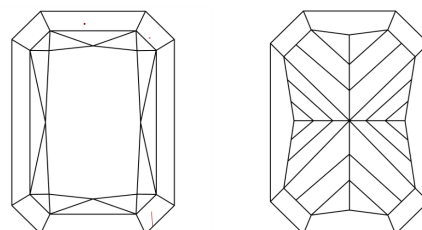
Comments: This Laboratory Grown Diamond was created by Chemical Vapor Deposition (CVD) growth process.

PROPORTIONS



Sample Image Used

CLARITY CHARACTERISTICS



KEY TO SYMBOLS

Red symbols indicate internal characteristics.  
Green symbols indicate external characteristics.

COLOR

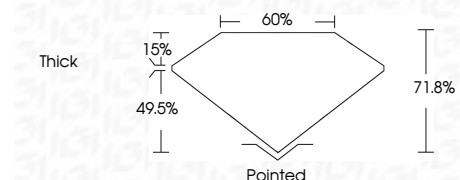
D E F G H I J Faint Very Light Light

CLARITY

FL IF VS<sup>1-2</sup> VS<sup>1-2</sup> SI<sup>1-2</sup> I<sup>1-3</sup>  
Flawless Internally Flawless Very Very Slightly Included Very Slightly Included Slightly Included Included



February 10, 2026  
IGI Report Number LG770699370  
Description LABORATORY GROWN DIAMOND  
Shape and Cutting Style CUT CORNERED RECTANGULAR MIXED CUT  
Measurements 7.83 X 5.56 X 3.99 MM  
GRADING RESULTS  
Carat Weight 1.70 CARAT  
Color Grade FANCY INTENSE YELLOW  
Clarity Grade VS 1



ADDITIONAL GRADING INFORMATION

Polish EXCELLENT  
Symmetry EXCELLENT  
Fluorescence NONE  
Inscription(s) LG770699370  
Comments: This Laboratory Grown Diamond was created by Chemical Vapor Deposition (CVD) growth process.



February 10, 2026  
IGI Report No LG770699370  
CUT CORNERED RECT. MIXED CUT  
7.83 X 5.56 X 3.99 MM  
1.70 CARAT  
FANCY INTENSE YELLOW  
VS 1  
71.0%  
60%  
Thick  
Pointed  
EXCELLENT  
EXCELLENT  
NONE  
Inscription(s) LG770699370  
Comments: This Laboratory Grown Diamond was created by Chemical Vapor Deposition (CVD) growth process.