



ELECTRONIC COPY

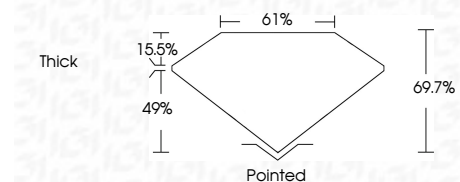
LG770699333
Report verification at igi.org



February 10, 2026
IGI Report Number **LG770699333**
Description **LABORATORY GROWN DIAMOND**
Shape and Cutting Style **CUT CORNERED
RECTANGULAR MODIFIED
BRILLIANT**
Measurements **8.06 X 5.78 X 4.03 MM**

GRADING RESULTS

Carat Weight **1.81 CARAT**
Color Grade **FANCY INTENSE YELLOW**
Clarity Grade **VS 1**



ADDITIONAL GRADING INFORMATION

Polish **EXCELLENT**
Symmetry **EXCELLENT**
Fluorescence **NONE**
Inscription(s) **IGI LG770699333**
Comments: This Laboratory Grown Diamond was created by Chemical Vapor Deposition (CVD) growth process.



February 10, 2026
IGI Report No LG770699333
CUT CORNERED RECT. MODIFIED BRILLIANT
8.06 X 5.78 X 4.03 MM
1.81 CARAT
FANCY INTENSE YELLOW
VS 1
69.7%
61%
Thick
Pointed
EXCELLENT
EXCELLENT
NONE
IGI LG770699333

Comments: This Laboratory Grown Diamond was created by Chemical Vapor Deposition (CVD) growth process.

LABORATORY GROWN DIAMOND REPORT

February 10, 2026
IGI Report Number **LG770699333**
Description **LABORATORY GROWN DIAMOND**
Shape and Cutting Style **CUT CORNERED RECTANGULAR
MODIFIED BRILLIANT**
Measurements **8.06 X 5.78 X 4.03 MM**

GRADING RESULTS

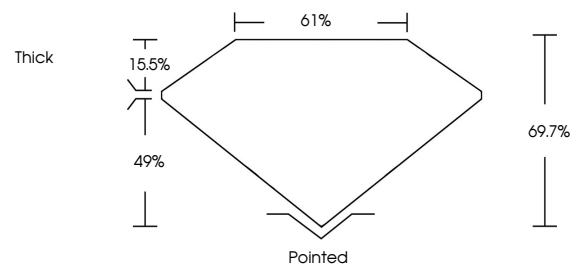
Carat Weight **1.81 CARAT**
Color Grade **FANCY INTENSE YELLOW**
Clarity Grade **VS 1**

ADDITIONAL GRADING INFORMATION

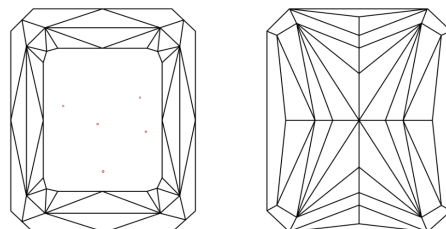
Polish **EXCELLENT**
Symmetry **EXCELLENT**
Fluorescence **NONE**
Inscription(s) **IGI LG770699333**

Comments: This Laboratory Grown Diamond was created by Chemical Vapor Deposition (CVD) growth process.

PROPORTIONS

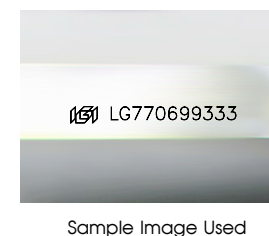


CLARITY CHARACTERISTICS



KEY TO SYMBOLS

Red symbols indicate internal characteristics.
Green symbols indicate external characteristics.



COLOR

D E F G H I J Faint Very Light Light

CLARITY

FL	IF	VS ¹⁻²	VS ¹⁻²	SI ¹⁻²	I ¹⁻³
Flawless	Internally Flawless	Very Very Slightly Included	Very Slightly Included	Slightly Included	Included

