



ELECTRONIC COPY

LG770699271
Report verification at igi.org



February 9, 2026
IGI Report Number **LG770699271**
Description **LABORATORY GROWN DIAMOND**
Shape and Cutting Style **SQUARE CUSHION MODIFIED BRILLIANT**
Measurements **5.67 X 5.57 X 3.81 MM**
GRADING RESULTS
Carat Weight **1.13 CARAT**
Color Grade **FANCY INTENSE YELLOW**
Clarity Grade **VVS 2**

February 9, 2026
IGI Report Number **LG770699271**
Description **LABORATORY GROWN DIAMOND**
Shape and Cutting Style **SQUARE CUSHION MODIFIED BRILLIANT**
Measurements **5.67 X 5.57 X 3.81 MM**

GRADING RESULTS

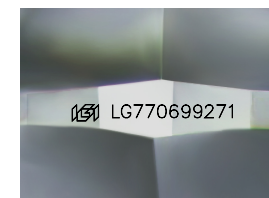
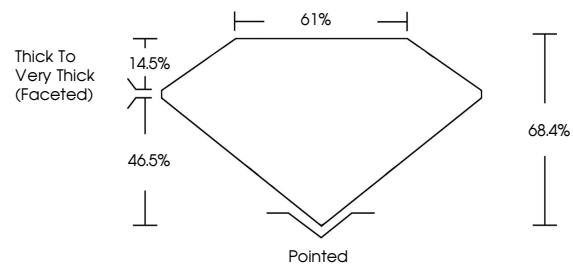
Carat Weight **1.13 CARAT**
Color Grade **FANCY INTENSE YELLOW**
Clarity Grade **VVS 2**

ADDITIONAL GRADING INFORMATION

Polish **EXCELLENT**
Symmetry **EXCELLENT**
Fluorescence **NONE**
Inscription(s) **IGI LG770699271**

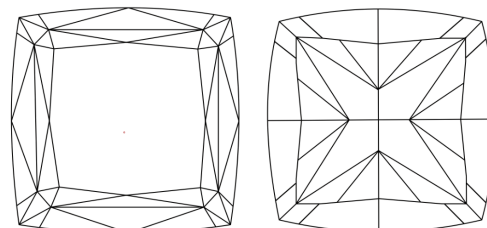
Comments: This Laboratory Grown Diamond was created by Chemical Vapor Deposition (CVD) growth process.

PROPORTIONS



Sample Image Used

CLARITY CHARACTERISTICS



KEY TO SYMBOLS

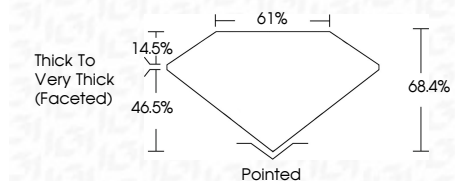
Red symbols indicate internal characteristics.
Green symbols indicate external characteristics.

COLOR

D E F G H I J Faint Very Light Light

CLARITY

FL	IF	VVS ¹⁻²	VS ¹⁻²	SI ¹⁻²	I ¹⁻³
Flawless	Internally Flawless	Very Very Slightly Included	Very Slightly Included	Slightly Included	Included



ADDITIONAL GRADING INFORMATION

Polish **EXCELLENT**
Symmetry **EXCELLENT**
Fluorescence **NONE**
Inscription(s) **IGI LG770699271**
Comments: This Laboratory Grown Diamond was created by Chemical Vapor Deposition (CVD) growth process.



IGI



February 9, 2026
IGI Report No LG770699271
SQUARE CUSHION MODIFIED BRILLIANT
5.67 X 5.57 X 3.81 MM
1.13 CARAT
FANCY INTENSE YELLOW
VVS 2
68.4%
61%
Thick to Very Thick (Faceted)
Pointed
EXCELLENT
EXCELLENT
NONE
IGI LG770699271

Comments: This Laboratory Grown Diamond was created by Chemical Vapor Deposition (CVD) growth process.