



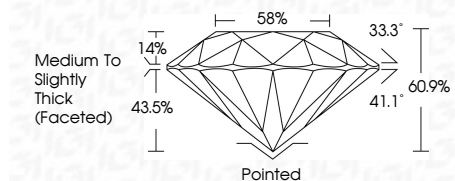
ELECTRONIC COPY

LG770693023 Report verification at igi.org



February 16, 2026 IGI Report Number LG770693023 Description LABORATORY GROWN DIAMOND Shape and Cutting Style ROUND BRILLIANT Measurements 8.18 - 8.21 X 4.99 MM

GRADING RESULTS Carat Weight 2.03 CARATS Color Grade E Clarity Grade VVS 2 Cut Grade IDEAL



ADDITIONAL GRADING INFORMATION Polish EXCELLENT Symmetry EXCELLENT Fluorescence NONE Inscription(s) LG770693023 Comments: This Laboratory Grown Diamond was created by Chemical Vapor Deposition (CVD) growth process. Type IIa



February 16, 2026 IGI Report No LG770693023 ROUND BRILLIANT 8.18 - 8.21 X 4.99 MM 2.03 CARATS E VVS 2 IDEAL 60.9% 58% Medium To Slightly Thick (Faceted) Pointed EXCELLENT EXCELLENT NONE LG770693023 Comments: This Laboratory Grown Diamond was created by Chemical Vapor Deposition (CVD) growth process. Type IIa

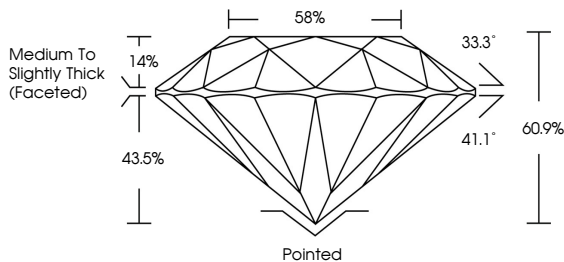
February 16, 2026 IGI Report Number LG770693023 Description LABORATORY GROWN DIAMOND Shape and Cutting Style ROUND BRILLIANT Measurements 8.18 - 8.21 X 4.99 MM

GRADING RESULTS Carat Weight 2.03 CARATS Color Grade E Clarity Grade VVS 2 Cut Grade IDEAL

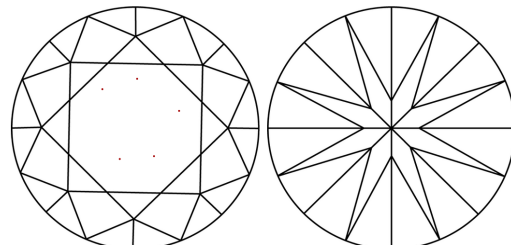
ADDITIONAL GRADING INFORMATION Polish EXCELLENT Symmetry EXCELLENT Fluorescence NONE Inscription(s) LG770693023

Comments: This Laboratory Grown Diamond was created by Chemical Vapor Deposition (CVD) growth process. Type IIa

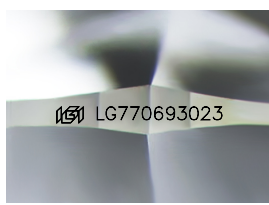
PROPORTIONS



CLARITY CHARACTERISTICS



KEY TO SYMBOLS Red symbols indicate internal characteristics. Green symbols indicate external characteristics.



Sample Image Used

Color scale table with categories D, E, F, G, H, I, J, Faint, Very Light, Light

Clarity scale table with categories FL, IF, VVS 1-2, VS 1-2, SI 1-2, I 1-3

