



March 19, 2026

IGI Report Number **LG770687388**

**OVAL BRILLIANT
LABORATORY GROWN DIAMOND
7.69 X 5.51 X 3.33 MM**

Carat Weight **0.93 CARAT**
Color Grade **F**
Clarity Grade **VS 2**
Polish **VERY GOOD**
Symmetry **VERY GOOD**
Fluorescence **NONE**
Inscription(s) **IGI LG770687388**

Comments: This Laboratory Grown Diamond was created by Chemical Vapor Deposition (CVD) growth process. Type IIa

LABORATORY GROWN DIAMOND REPORT

March 19, 2026
IGI Report Number **LG770687388**
Description **LABORATORY GROWN DIAMOND**
Shape and Cutting Style **OVAL BRILLIANT**
Measurements **7.69 X 5.51 X 3.33 MM**

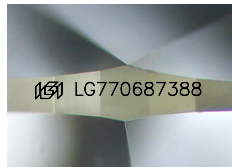
GRADING RESULTS

Carat Weight **0.93 CARAT**
Color Grade **F**
Clarity Grade **VS 2**

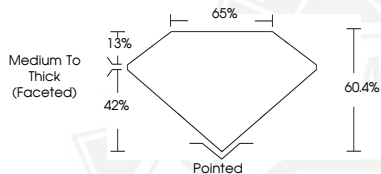
ADDITIONAL GRADING INFORMATION

Polish **VERY GOOD**
Symmetry **VERY GOOD**
Fluorescence **NONE**
Inscription(s) **IGI LG770687388**

Comments: This Laboratory Grown Diamond was created by Chemical Vapor Deposition (CVD) growth process. Type IIa



Sample Image Used



March 19, 2026

IGI Report Number **LG770687388**

**OVAL BRILLIANT
LABORATORY GROWN DIAMOND
7.69 X 5.51 X 3.33 MM**

Carat Weight **0.93 CARAT**
Color Grade **F**
Clarity Grade **VS 2**
Polish **VERY GOOD**
Symmetry **VERY GOOD**
Fluorescence **NONE**
Inscription(s) **IGI LG770687388**

Comments: This Laboratory Grown Diamond was created by Chemical Vapor Deposition (CVD) growth process. Type IIa



THIS DOCUMENT WAS PRODUCED WITH THE FOLLOWING SECURITY MEASURES: SPECIAL DOCUMENT PAPER, INK SCREENS, WATERMARK, BACKGROUND DESIGNS, HOLOGRAM AND OTHER SECURITY FEATURES NOT LISTED AND DO EXCEED DOCUMENT SECURITY INDUSTRY GUIDELINES.