



March 16, 2026

IGI Report Number LG770686858
RECTANGULAR PRINCESS CUT
LABORATORY GROWN DIAMOND
4.91 X 4.63 X 3.50 MM

Carat Weight 0.68 CARAT
Color Grade E
Clarity Grade VS 2
Polish VERY GOOD
Symmetry VERY GOOD
Fluorescence NONE
Inscription(s) IGI LG770686858

Comments: This Laboratory Grown Diamond was created by Chemical Vapor Deposition (CVD) growth process. Type IIa

LABORATORY GROWN DIAMOND REPORT

March 16, 2026
IGI Report Number **LG770686858**
Description **LABORATORY GROWN DIAMOND**
Shape and Cutting Style **RECTANGULAR PRINCESS CUT**
Measurements **4.91 X 4.63 X 3.50 MM**

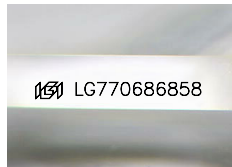
GRADING RESULTS

Carat Weight 0.68 CARAT
Color Grade E
Clarity Grade VS 2

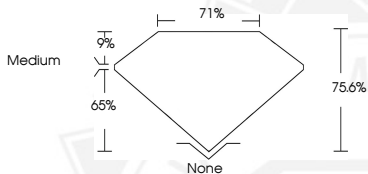
ADDITIONAL GRADING INFORMATION

Polish VERY GOOD
Symmetry VERY GOOD
Fluorescence NONE
Inscription(s) IGI LG770686858

Comments: This Laboratory Grown Diamond was created by Chemical Vapor Deposition (CVD) growth process.
Type IIa



Sample Image Used



March 16, 2026

IGI Report Number LG770686858
RECTANGULAR PRINCESS CUT
LABORATORY GROWN DIAMOND
4.91 X 4.63 X 3.50 MM

Carat Weight 0.68 CARAT
Color Grade E
Clarity Grade VS 2
Polish VERY GOOD
Symmetry VERY GOOD
Fluorescence NONE
Inscription(s) IGI LG770686858

Comments: This Laboratory Grown Diamond was created by Chemical Vapor Deposition (CVD) growth process. Type IIa



THIS DOCUMENT WAS PRODUCED WITH THE FOLLOWING SECURITY MEASURES: SPECIAL DOCUMENT PAPER, INK SCREENS, WATERMARK, BACKGROUND DESIGNS, HOLOGRAM AND OTHER SECURITY FEATURES NOT LISTED AND DO EXCEED DOCUMENT SECURITY INDUSTRY GUIDELINES.