



March 16, 2026

IGI Report Number LG770686854
RECTANGULAR PRINCESS CUT
LABORATORY GROWN DIAMOND
4.82 X 4.56 X 3.60 MM

Carat Weight 0.71 CARAT
Color Grade F
Clarity Grade VS 1
Polish VERY GOOD
Symmetry GOOD
Fluorescence NONE
Inscription(s) IGI LG770686854

Comments: As Grown - No indication of post-growth treatment. This Laboratory Grown Diamond was created by High Pressure High Temperature (HPHT) growth process. Type II

LABORATORY GROWN DIAMOND REPORT

March 16, 2026
IGI Report Number **LG770686854**
Description **LABORATORY GROWN DIAMOND**
Shape and Cutting Style **RECTANGULAR PRINCESS CUT**
Measurements **4.82 X 4.56 X 3.60 MM**

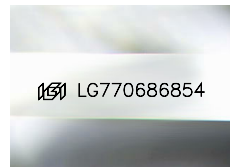
GRADING RESULTS

Carat Weight 0.71 CARAT
Color Grade F
Clarity Grade VS 1

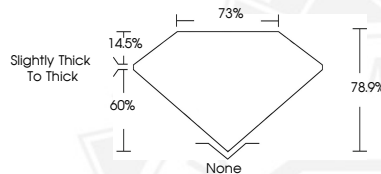
ADDITIONAL GRADING INFORMATION

Polish VERY GOOD
Symmetry GOOD
Fluorescence NONE
Inscription(s) IGI LG770686854

Comments: As Grown - No indication of post-growth treatment. This Laboratory Grown Diamond was created by High Pressure High Temperature (HPHT) growth process. Type II



Sample Image Used



March 16, 2026

IGI Report Number LG770686854
RECTANGULAR PRINCESS CUT
LABORATORY GROWN DIAMOND
4.82 X 4.56 X 3.60 MM

Carat Weight 0.71 CARAT
Color Grade F
Clarity Grade VS 1
Polish VERY GOOD
Symmetry GOOD
Fluorescence NONE
Inscription(s) IGI LG770686854

Comments: As Grown - No indication of post-growth treatment. This Laboratory Grown Diamond was created by High Pressure High Temperature (HPHT) growth process. Type II



THIS DOCUMENT WAS PRODUCED WITH THE FOLLOWING SECURITY MEASURES: SPECIAL DOCUMENT PAPER, INK SCREENS, WATERMARK, BACKGROUND DESIGNS, HOLOGRAM AND OTHER SECURITY FEATURES NOT LISTED AND DO EXCEED DOCUMENT SECURITY INDUSTRY GUIDELINES.