



# INTERNATIONAL GEMOLOGICAL INSTITUTE

ELECTRONIC COPY



March 3, 2026

IGI Report Number LG770686223

ROUND BRILLIANT  
LABORATORY GROWN DIAMOND  
5.25 - 5.28 X 3.17 MM

Carat Weight 0.53 CARAT  
Color Grade D  
Clarity Grade VVS 1  
Cut Grade IDEAL  
Polish EXCELLENT  
Symmetry EXCELLENT  
Fluorescence NONE  
Inscription(s) IGI LG770686223

Comments: HEARTS & ARROWS As Grown - No indication of post-growth treatment. This Laboratory Grown Diamond was created by High Pressure High Temperature (HPHT) growth process. Type II

## LABORATORY GROWN DIAMOND REPORT

March 3, 2026  
IGI Report Number LG770686223  
Description LABORATORY GROWN DIAMOND  
Shape and Cutting Style ROUND BRILLIANT  
Measurements 5.25 - 5.28 X 3.17 MM

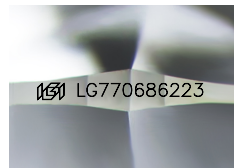
### GRADING RESULTS

Carat Weight 0.53 CARAT  
Color Grade D  
Clarity Grade VVS 1  
Cut Grade IDEAL

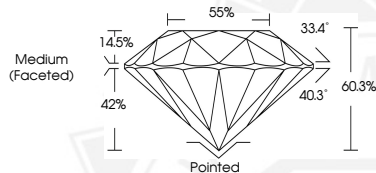
### ADDITIONAL GRADING INFORMATION

Polish EXCELLENT  
Symmetry EXCELLENT  
Fluorescence NONE  
Inscription(s) IGI LG770686223

Comments: HEARTS & ARROWS As Grown - No indication of post-growth treatment. This Laboratory Grown Diamond was created by High Pressure High Temperature (HPHT) growth process. Type II



Sample Image Used



HEARTS & ARROWS



March 3, 2026

IGI Report Number LG770686223

ROUND BRILLIANT  
LABORATORY GROWN DIAMOND  
5.25 - 5.28 X 3.17 MM

Carat Weight 0.53 CARAT  
Color Grade D  
Clarity Grade VVS 1  
Cut Grade IDEAL  
Polish EXCELLENT  
Symmetry EXCELLENT  
Fluorescence NONE  
Inscription(s) IGI LG770686223

Comments: HEARTS & ARROWS As Grown - No indication of post-growth treatment. This Laboratory Grown Diamond was created by High Pressure High Temperature (HPHT) growth process. Type II

THIS DOCUMENT WAS PRODUCED WITH THE FOLLOWING SECURITY MEASURES: SPECIAL DOCUMENT PAPER, INK SCREENS, WATERMARK, BACKGROUND DESIGNS, HOLOGRAM AND OTHER SECURITY FEATURES NOT LISTED AND DO EXCEED DOCUMENT SECURITY INDUSTRY GUIDELINES.

For terms & conditions and to verify this report, please visit [www.igi.org](http://www.igi.org)