



March 3, 2026

IGI Report Number LG770686107
ROUND BRILLIANT
LABORATORY GROWN DIAMOND
6.18 - 6.20 X 3.86 MM

Carat Weight 0.90 CARAT
Color Grade FANCY VIVID BLUE
Clarity Grade VS 2
Cut Grade IDEAL
Polish EXCELLENT
Symmetry EXCELLENT
Fluorescence NONE
Inscription(s) IGI LG770686107

Comments: This Laboratory Grown Diamond was created by Chemical Vapor Deposition (CVD) growth process. Indications of post-growth treatment.

LABORATORY GROWN DIAMOND REPORT

March 3, 2026
IGI Report Number **LG770686107**
Description **LABORATORY GROWN DIAMOND**
Shape and Cutting Style **ROUND BRILLIANT**
Measurements **6.18 - 6.20 X 3.86 MM**

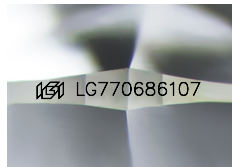
GRADING RESULTS

Carat Weight 0.90 CARAT
Color Grade FANCY VIVID BLUE
Clarity Grade VS 2
Cut Grade IDEAL

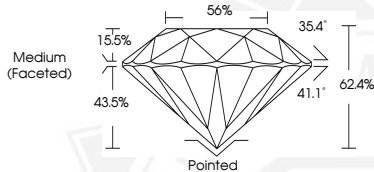
ADDITIONAL GRADING INFORMATION

Polish EXCELLENT
Symmetry EXCELLENT
Fluorescence NONE
Inscription(s) IGI LG770686107

Comments: This Laboratory Grown Diamond was created by Chemical Vapor Deposition (CVD) growth process. Indications of post-growth treatment.



Sample Image Used



March 3, 2026

IGI Report Number LG770686107
ROUND BRILLIANT
LABORATORY GROWN DIAMOND
6.18 - 6.20 X 3.86 MM

Carat Weight 0.90 CARAT
Color Grade FANCY VIVID BLUE
Clarity Grade VS 2
Cut Grade IDEAL
Polish EXCELLENT
Symmetry EXCELLENT
Fluorescence NONE
Inscription(s) IGI LG770686107

Comments: This Laboratory Grown Diamond was created by Chemical Vapor Deposition (CVD) growth process. Indications of post-growth treatment.



THIS DOCUMENT WAS PRODUCED WITH THE FOLLOWING SECURITY MEASURES: SPECIAL DOCUMENT PAPER, INK SCREENS, WATERMARK, BACKGROUND DESIGNS, HOLOGRAM AND OTHER SECURITY FEATURES NOT LISTED AND DO EXCEED DOCUMENT SECURITY INDUSTRY GUIDELINES.