



**INTERNATIONAL
GEMOLOGICAL
INSTITUTE**

ELECTRONIC COPY



February 20, 2026

IGI Report Number **LG770685617**

**ROUND BRILLIANT
LABORATORY GROWN DIAMOND
6.36 - 6.39 X 3.91 MM**

Carat Weight **0.97 CARAT**
Color Grade **FANCY INTENSE
BROWNISH PINK**

Clarity Grade **VS 1**
Cut Grade **IDEAL**

Polish **EXCELLENT**
Symmetry **EXCELLENT**

Fluorescence **SLIGHT**
Inscription(s) **IGI LG770685617**

Comments: This Laboratory Grown Diamond was created by Chemical Vapor Deposition (CVD) growth process. Indications of post-growth treatment.

LABORATORY GROWN DIAMOND REPORT

February 20, 2026

IGI Report Number

LG770685617

Description

LABORATORY GROWN DIAMOND

Shape and Cutting Style

ROUND BRILLIANT

Measurements

6.36 - 6.39 X 3.91 MM

GRADING RESULTS

Carat Weight

0.97 CARAT

Color Grade

FANCY INTENSE BROWNISH PINK

Clarity Grade

VS 1

Cut Grade

IDEAL

ADDITIONAL GRADING INFORMATION

Polish

EXCELLENT

Symmetry

EXCELLENT

Fluorescence

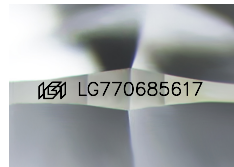
SLIGHT

Inscription(s)

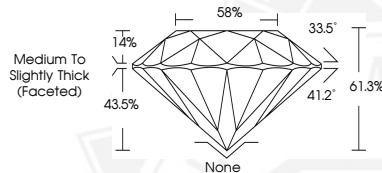
IGI LG770685617

Comments: This Laboratory Grown Diamond was created by Chemical Vapor Deposition (CVD) growth process.

Indications of post-growth treatment.



Sample Image Used



February 20, 2026

IGI Report Number **LG770685617**

**ROUND BRILLIANT
LABORATORY GROWN DIAMOND
6.36 - 6.39 X 3.91 MM**

Carat Weight **0.97 CARAT**
Color Grade **FANCY INTENSE
BROWNISH PINK**

Clarity Grade **VS 1**
Cut Grade **IDEAL**

Polish **EXCELLENT**
Symmetry **EXCELLENT**

Fluorescence **SLIGHT**
Inscription(s) **IGI LG770685617**

Comments: This Laboratory Grown Diamond was created by Chemical Vapor Deposition (CVD) growth process. Indications of post-growth treatment.



THIS DOCUMENT WAS PRODUCED WITH THE FOLLOWING SECURITY MEASURES: SPECIAL DOCUMENT PAPER, INK SCREENS, WATERMARK BACKGROUND DESIGNS, HOLOGRAM AND OTHER SECURITY FEATURES NOT LISTED AND DO EXCEED DOCUMENT SECURITY INDUSTRY GUIDELINES.

For terms & conditions and to verify this report, please visit www.igi.org