



February 12, 2026

IGI Report Number **LG770684478**

ROUND BRILLIANT

LABORATORY GROWN DIAMOND

6.42 - 6.44 X 3.88 MM

Carat Weight **0.98 CARAT**

Color Grade **FANCY INTENSE PINK**

Clarity Grade **VS 2**

Cut Grade **IDEAL**

Polish **EXCELLENT**

Symmetry **EXCELLENT**

Fluorescence **SLIGHT**

Inscription(s) **IGI LG770684478**

Comments: This Laboratory Grown Diamond was created by Chemical Vapor Deposition (CVD) growth process. Indications of post-growth treatment.

LABORATORY GROWN DIAMOND REPORT

February 12, 2026

IGI Report Number

LG770684478

Description

LABORATORY GROWN DIAMOND

Shape and Cutting Style

ROUND BRILLIANT

Measurements

6.42 - 6.44 X 3.88 MM

GRADING RESULTS

Carat Weight

0.98 CARAT

Color Grade

FANCY INTENSE PINK

Clarity Grade

VS 2

Cut Grade

IDEAL

ADDITIONAL GRADING INFORMATION

Polish

EXCELLENT

Symmetry

EXCELLENT

Fluorescence

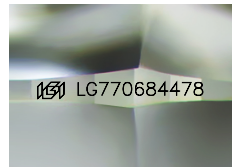
SLIGHT

Inscription(s)

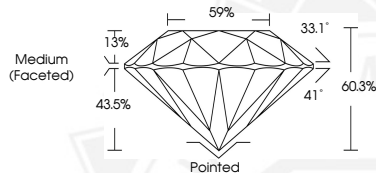
IGI LG770684478

Comments: This Laboratory Grown Diamond was created by Chemical Vapor Deposition (CVD) growth process.

Indications of post-growth treatment.



Sample Image Used



February 12, 2026

IGI Report Number **LG770684478**

ROUND BRILLIANT

LABORATORY GROWN DIAMOND

6.42 - 6.44 X 3.88 MM

Carat Weight **0.98 CARAT**

Color Grade **FANCY INTENSE PINK**

Clarity Grade **VS 2**

Cut Grade **IDEAL**

Polish **EXCELLENT**

Symmetry **EXCELLENT**

Fluorescence **SLIGHT**

Inscription(s) **IGI LG770684478**

Comments: This Laboratory Grown Diamond was created by Chemical Vapor Deposition (CVD) growth process. Indications of post-growth treatment.



THIS DOCUMENT WAS PRODUCED WITH THE FOLLOWING SECURITY MEASURES: SPECIAL DOCUMENT PAPER, INK SCREENS, WATERMARK, BACKGROUND DESIGNS, HOLOGRAM AND OTHER SECURITY FEATURES NOT LISTED AND DO EXCEED DOCUMENT SECURITY INDUSTRY GUIDELINES.