



LABORATORY GROWN DIAMOND REPORT

February 11, 2026
 IGI Report Number **LG770684459**
 Description **LABORATORY GROWN DIAMOND**
 Shape and Cutting Style **ROUND BRILLIANT**
 Measurements **5.50 - 5.56 X 3.33 MM**

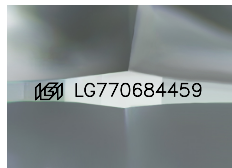
GRADING RESULTS

Carat Weight **0.62 CARAT**
 Color Grade **FANCY INTENSE PINK**
 Clarity Grade **VS 1**
 Cut Grade **IDEAL**

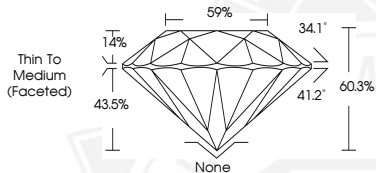
ADDITIONAL GRADING INFORMATION

Polish **VERY GOOD**
 Symmetry **VERY GOOD**
 Fluorescence **SLIGHT**
 Inscription(s) **IGI LG770684459**

Comments: This Laboratory Grown Diamond was created by High Pressure High Temperature (HPHT) growth process.



Sample Image Used



February 11, 2026
 IGI Report Number **LG770684459**
 ROUND BRILLIANT
 LABORATORY GROWN DIAMOND
 5.50 - 5.56 X 3.33 MM
 Carat Weight **0.62 CARAT**
 Color Grade **FANCY INTENSE PINK**
 Clarity Grade **VS 1**
 Cut Grade **IDEAL**
 Polish **VERY GOOD**
 Symmetry **VERY GOOD**
 Fluorescence **SLIGHT**
 Inscription(s) **IGI LG770684459**

Comments: This Laboratory Grown Diamond was created by High Pressure High Temperature (HPHT) growth process.



February 11, 2026
 IGI Report Number **LG770684459**
 ROUND BRILLIANT
 LABORATORY GROWN DIAMOND
 5.50 - 5.56 X 3.33 MM
 Carat Weight **0.62 CARAT**
 Color Grade **FANCY INTENSE PINK**
 Clarity Grade **VS 1**
 Cut Grade **IDEAL**
 Polish **VERY GOOD**
 Symmetry **VERY GOOD**
 Fluorescence **SLIGHT**
 Inscription(s) **IGI LG770684459**

Comments: This Laboratory Grown Diamond was created by High Pressure High Temperature (HPHT) growth process.



THIS DOCUMENT WAS PRODUCED WITH THE FOLLOWING SECURITY MEASURES: SPECIAL DOCUMENT PAPER, INK SCREENS, WATERMARK, BACKGROUND DESIGNS, HOLOGRAM AND OTHER SECURITY FEATURES NOT LISTED AND DO EXCEED DOCUMENT SECURITY INDUSTRY GUIDELINES.