



February 10, 2026

IGI Report Number **LG770683798**

**ROUND BRILLIANT**

**LABORATORY GROWN DIAMOND**

**5.63 - 5.68 X 3.50 MM**

Carat Weight	<b>0.71 CARAT</b>
Color Grade	<b>Q-R</b>
Clarity Grade	<b>SI 1</b>
Cut Grade	<b>VERY GOOD</b>
Polish	<b>GOOD</b>
Symmetry	<b>VERY GOOD</b>
Fluorescence	<b>VERY SLIGHT</b>
Inscription(s)	<b>IGI LG770683798</b>

Comments: This Laboratory Grown Diamond was created by High Pressure High Temperature (HPHT) growth process. Type II

**LABORATORY GROWN DIAMOND REPORT**

February 10, 2026

IGI Report Number

**LG770683798**

Description

**LABORATORY GROWN DIAMOND**

Shape and Cutting Style

**ROUND BRILLIANT**

Measurements

**5.63 - 5.68 X 3.50 MM**

**GRADING RESULTS**

Carat Weight

**0.71 CARAT**

Color Grade

**Q-R**

Clarity Grade

**SI 1**

Cut Grade

**VERY GOOD**

**ADDITIONAL GRADING INFORMATION**

Polish

**GOOD**

Symmetry

**VERY GOOD**

Fluorescence

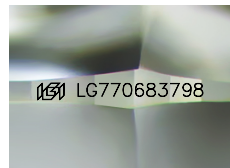
**VERY SLIGHT**

Inscription(s)

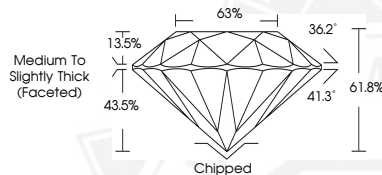
**IGI LG770683798**

Comments: This Laboratory Grown Diamond was created by High Pressure High Temperature (HPHT) growth process.

Type II



Sample Image Used



February 10, 2026

IGI Report Number **LG770683798**

**ROUND BRILLIANT**

**LABORATORY GROWN DIAMOND**

**5.63 - 5.68 X 3.50 MM**

Carat Weight	<b>0.71 CARAT</b>
Color Grade	<b>Q-R</b>
Clarity Grade	<b>SI 1</b>
Cut Grade	<b>VERY GOOD</b>
Polish	<b>GOOD</b>
Symmetry	<b>VERY GOOD</b>
Fluorescence	<b>VERY SLIGHT</b>
Inscription(s)	<b>IGI LG770683798</b>

Comments: This Laboratory Grown Diamond was created by High Pressure High Temperature (HPHT) growth process. Type II



THIS DOCUMENT WAS PRODUCED WITH THE FOLLOWING SECURITY MEASURES: SPECIAL DOCUMENT PAPER, INK SCREENS, WATERMARK, BACKGROUND DESIGNS, HOLOGRAM AND OTHER SECURITY FEATURES NOT LISTED AND DO EXCEED DOCUMENT SECURITY INDUSTRY GUIDELINES.