



LABORATORY GROWN DIAMOND REPORT

February 11, 2026
 IGI Report Number **LG770683782**
 Description **LABORATORY GROWN DIAMOND**
 Shape and Cutting Style **PEAR BRILLIANT**
 Measurements **7.04 X 4.59 X 2.90 MM**

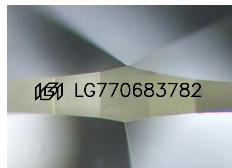
GRADING RESULTS

Carat Weight **0.53 CARAT**
 Color Grade **N**
 Clarity Grade **VS 1**

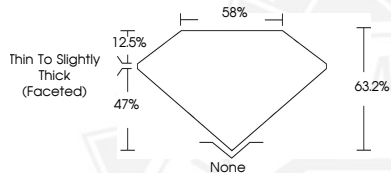
ADDITIONAL GRADING INFORMATION

Polish **VERY GOOD**
 Symmetry **GOOD**
 Fluorescence **SLIGHT**
 Inscription(s) **IGI LG770683782**

Comments: This Laboratory Grown Diamond was created by
 Chemical Vapor Deposition (CVD) growth process.
 Type IIa
 Very Light Brown



Sample Image Used



February 11, 2026
 IGI Report Number **LG770683782**
PEAR BRILLIANT
LABORATORY GROWN DIAMOND
7.04 X 4.59 X 2.90 MM
 Carat Weight **0.53 CARAT**
 Color Grade **N**
 Clarity Grade **VS 1**
 Polish **VERY GOOD**
 Symmetry **GOOD**
 Fluorescence **SLIGHT**
 Inscription(s) **IGI LG770683782**

Comments: This Laboratory Grown Diamond was created by
 Chemical Vapor Deposition (CVD) growth process. Type IIa Very Light Brown



February 11, 2026
 IGI Report Number **LG770683782**
PEAR BRILLIANT
LABORATORY GROWN DIAMOND
7.04 X 4.59 X 2.90 MM
 Carat Weight **0.53 CARAT**
 Color Grade **N**
 Clarity Grade **VS 1**
 Polish **VERY GOOD**
 Symmetry **GOOD**
 Fluorescence **SLIGHT**
 Inscription(s) **IGI LG770683782**

Comments: This Laboratory Grown Diamond was created by
 Chemical Vapor Deposition (CVD) growth process. Type IIa Very Light Brown



THIS DOCUMENT WAS PRODUCED WITH THE FOLLOWING SECURITY MEASURES: SPECIAL DOCUMENT PAPER, INK SCREENS, WATERMARK, BACKGROUND DESIGNS, HOLOGRAM AND OTHER SECURITY FEATURES NOT LISTED AND DO EXCEED DOCUMENT SECURITY INDUSTRY GUIDELINES.