



LABORATORY GROWN DIAMOND REPORT

February 11, 2026
 IGI Report Number **LG770683779**
 Description **LABORATORY GROWN DIAMOND**
 Shape and Cutting Style **PRINCESS CUT**
 Measurements **4.51 X 4.31 X 2.99 MM**

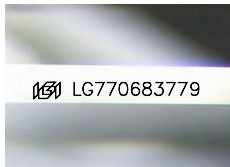
GRADING RESULTS

Carat Weight **0.52 CARAT**
 Color Grade **O-P**
 Clarity Grade **VS 2**

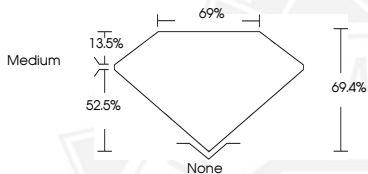
ADDITIONAL GRADING INFORMATION

Polish **VERY GOOD**
 Symmetry **GOOD**
 Fluorescence **SLIGHT**
 Inscription(s) **IGI LG770683779**

Comments: This Laboratory Grown Diamond was created by Chemical Vapor Deposition (CVD) growth process. Type IIa Very Light Brown



Sample Image Used



February 11, 2026
 IGI Report Number **LG770683779**
PRINCESS CUT
LABORATORY GROWN DIAMOND
4.51 X 4.31 X 2.99 MM
 Carat Weight **0.52 CARAT**
 Color Grade **O-P**
 Clarity Grade **VS 2**
 Polish **VERY GOOD**
 Symmetry **GOOD**
 Fluorescence **SLIGHT**
 Inscription(s) **IGI LG770683779**

Comments: This Laboratory Grown Diamond was created by Chemical Vapor Deposition (CVD) growth process. Type IIa Very Light Brown



February 11, 2026
 IGI Report Number **LG770683779**
PRINCESS CUT
LABORATORY GROWN DIAMOND
4.51 X 4.31 X 2.99 MM
 Carat Weight **0.52 CARAT**
 Color Grade **O-P**
 Clarity Grade **VS 2**
 Polish **VERY GOOD**
 Symmetry **GOOD**
 Fluorescence **SLIGHT**
 Inscription(s) **IGI LG770683779**

Comments: This Laboratory Grown Diamond was created by Chemical Vapor Deposition (CVD) growth process. Type IIa Very Light Brown



THIS DOCUMENT WAS PRODUCED WITH THE FOLLOWING SECURITY MEASURES: SPECIAL DOCUMENT PAPER, INK SCREENS, WATERMARK, BACKGROUND DESIGNS, HOLOGRAM AND OTHER SECURITY FEATURES NOT LISTED AND DO EXCEED DOCUMENT SECURITY INDUSTRY GUIDELINES.