



**ELECTRONIC COPY**

LG770680926  
Report verification at igi.org



February 19, 2026

IGI Report Number **LG770680926**

Description **LABORATORY GROWN DIAMOND**

Shape and Cutting Style **EMERALD CUT**

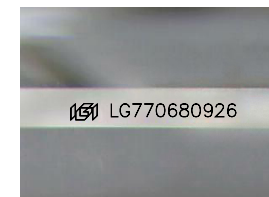
Measurements **14.60 X 10.17 X 6.91 MM**

**GRADING RESULTS**

Carat Weight **10.02 CARATS**

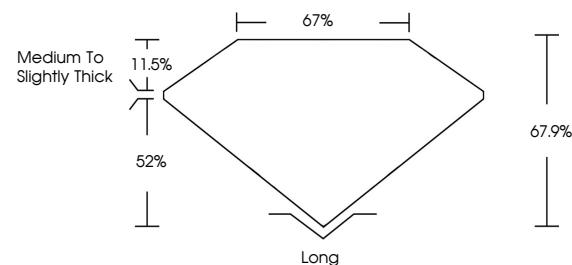
Color Grade **F**

Clarity Grade **VVS 2**

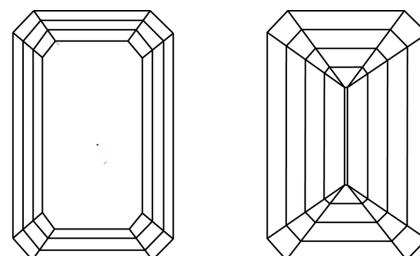


Sample Image Used

**PROPORTIONS**



**CLARITY CHARACTERISTICS**



**KEY TO SYMBOLS**

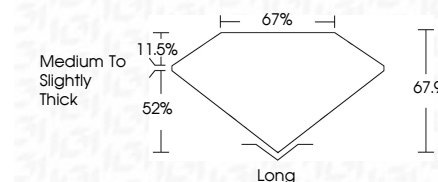
Red symbols indicate internal characteristics.  
Green symbols indicate external characteristics.

**COLOR**

D E F G H I J Faint Very Light Light

**CLARITY**

FL	IF	VVS <sup>1-2</sup>	VS <sup>1-2</sup>	SI <sup>1-2</sup>	I <sup>1-3</sup>
Flawless	Internally Flawless	Very Very Slightly Included	Very Slightly Included	Slightly Included	Included



**ADDITIONAL GRADING INFORMATION**

Polish **EXCELLENT**

Symmetry **EXCELLENT**

Fluorescence **NONE**

Inscription(s) **IGI LG770680926**

Comments: This Laboratory Grown Diamond was created by Chemical Vapor Deposition (CVD) growth process. Type IIa



February 19, 2026  
IGI Report No LG770680926  
**EMERALD CUT**

**14.60 X 10.17 X 6.91 MM**

Carat Weight **10.02 CARATS**  
Color Grade **F**  
Clarity Grade **VVS 2**  
Depth **67%**  
Table **67%**  
Girdle **Medium to Slightly Thick**

Culet **Long**  
Polish **EXCELLENT**  
Symmetry **EXCELLENT**  
Fluorescence **NONE**  
Inscription(s) **IGI LG770680926**

Comments: This Laboratory Grown Diamond was created by Chemical Vapor Deposition (CVD) growth process. Type IIa