



**ELECTRONIC COPY**

LG770680456  
Report verification at igi.org



February 18, 2026

IGI Report Number **LG770680456**

Description **LABORATORY GROWN DIAMOND**

Shape and Cutting Style **OVAL BRILLIANT**

Measurements **13.15 X 8.60 X 5.38 MM**

**GRADING RESULTS**

Carat Weight **4.02 CARATS**

Color Grade **H**

Clarity Grade **VVS 2**

February 18, 2026  
IGI Report Number **LG770680456**  
Description **LABORATORY GROWN DIAMOND**  
Shape and Cutting Style **OVAL BRILLIANT**  
Measurements **13.15 X 8.60 X 5.38 MM**

**GRADING RESULTS**

Carat Weight **4.02 CARATS**

Color Grade **H**

Clarity Grade **VVS 2**

**ADDITIONAL GRADING INFORMATION**

Polish **EXCELLENT**

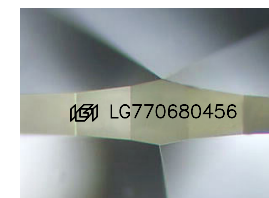
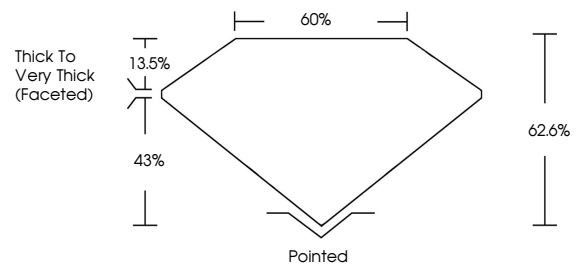
Symmetry **EXCELLENT**

Fluorescence **NONE**

Inscription(s) **IGI LG770680456**

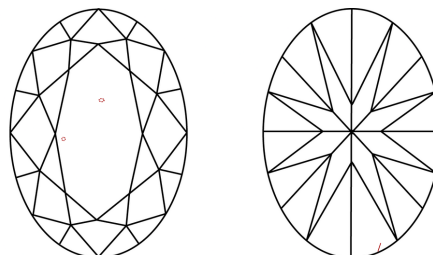
Comments: This Laboratory Grown Diamond was created by Chemical Vapor Deposition (CVD) growth process. Type IIa

**PROPORTIONS**



Sample Image Used

**CLARITY CHARACTERISTICS**



**KEY TO SYMBOLS**

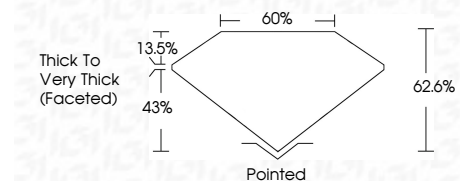
Red symbols indicate internal characteristics.  
Green symbols indicate external characteristics.

**COLOR**

D E F G H I J Faint Very Light Light

**CLARITY**

FL	IF	VVS <sup>1-2</sup>	VS <sup>1-2</sup>	SI <sup>1-2</sup>	I <sup>1-3</sup>
Flawless	Internally Flawless	Very Very Slightly Included	Very Slightly Included	Slightly Included	Included



**ADDITIONAL GRADING INFORMATION**

Polish **EXCELLENT**

Symmetry **EXCELLENT**

Fluorescence **NONE**

Inscription(s) **IGI LG770680456**

Comments: This Laboratory Grown Diamond was created by Chemical Vapor Deposition (CVD) growth process. Type IIa



**IGI**



February 18, 2026  
IGI Report No LG770680456  
OVAL BRILLIANT  
4.02 CARATS  
H  
4.02 CARATS  
H  
VVS 2  
62.6%  
43%  
60%  
Pointed  
EXCELLENT  
EXCELLENT  
NONE  
IGI LG770680456  
Comments: This Laboratory Grown Diamond was created by Chemical Vapor Deposition (CVD) growth process. Type IIa