



ELECTRONIC COPY

LG770679034
Report verification at igi.org



February 18, 2026

IGI Report Number **LG770679034**

Description **LABORATORY GROWN DIAMOND**

Shape and Cutting Style **ROUND BRILLIANT**

Measurements **9.34 - 9.37 X 5.78 MM**

GRADING RESULTS

Carat Weight **3.09 CARATS**

Color Grade **E**

Clarity Grade **VVS 2**

Cut Grade **IDEAL**

February 18, 2026

IGI Report Number **LG770679034**

Description **LABORATORY GROWN DIAMOND**

Shape and Cutting Style **ROUND BRILLIANT**

Measurements **9.34 - 9.37 X 5.78 MM**

GRADING RESULTS

Carat Weight **3.09 CARATS**

Color Grade **E**

Clarity Grade **VVS 2**

Cut Grade **IDEAL**

ADDITIONAL GRADING INFORMATION

Polish **EXCELLENT**

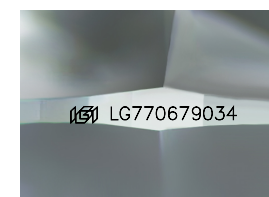
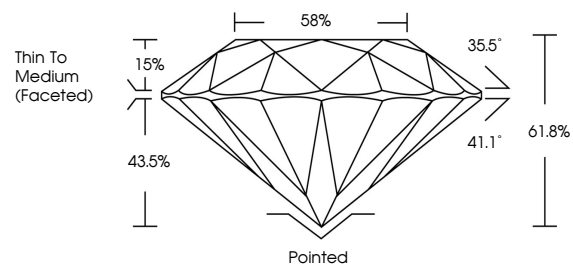
Symmetry **EXCELLENT**

Fluorescence **NONE**

Inscription(s) **IGI LG770679034**

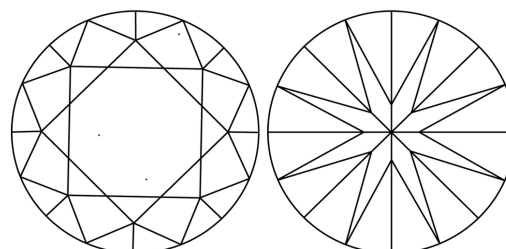
Comments: This Laboratory Grown Diamond was created by Chemical Vapor Deposition (CVD) growth process. Type IIa

PROPORTIONS



Sample Image Used

CLARITY CHARACTERISTICS



KEY TO SYMBOLS

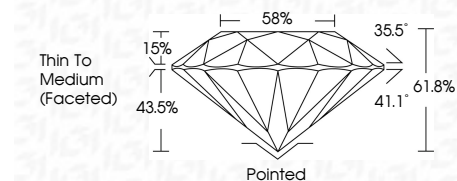
Red symbols indicate internal characteristics.
Green symbols indicate external characteristics.

COLOR

D E F G H I J Faint Very Light Light

CLARITY

| FL | IF | VVS ¹⁻² | VS ¹⁻² | SI ¹⁻² | I ¹⁻³ |
|----------|---------------------|-----------------------------|------------------------|-------------------|------------------|
| Flawless | Internally Flawless | Very Very Slightly Included | Very Slightly Included | Slightly Included | Included |



ADDITIONAL GRADING INFORMATION

Polish **EXCELLENT**

Symmetry **EXCELLENT**

Fluorescence **NONE**

Inscription(s) **IGI LG770679034**

Comments: This Laboratory Grown Diamond was created by Chemical Vapor Deposition (CVD) growth process. Type IIa



IGI



| | | | |
|---------------------------|--------------------------|--------------------------|-----------------|
| February 18, 2026 | 3.09 CARATS | E | Pointed |
| IGI Report No LG770679034 | 3.09 CARATS | VVS 2 | EXCELLENT |
| ROUND BRILLIANT | 9.34 - 9.37 X 5.78 MM | IDEAL | EXCELLENT |
| Carat Weight | 3.09 CARATS | 61.8% | NONE |
| Color Grade | E | 58% | IGI LG770679034 |
| Clarity Grade | VVS 2 | Thin To Medium (Faceted) | |
| Cut Grade | IDEAL | Pointed | |
| Depth | 61.8% | EXCELLENT | |
| Table | 58% | EXCELLENT | |
| Girdle | Thin To Medium (Faceted) | NONE | |
| Culet | Pointed | EXCELLENT | |
| Polish | EXCELLENT | EXCELLENT | |
| Symmetry | EXCELLENT | EXCELLENT | |
| Fluorescence | NONE | EXCELLENT | |
| Inscription(s) | IGI LG770679034 | EXCELLENT | |

Comments: This Laboratory Grown Diamond was created by Chemical Vapor Deposition (CVD) growth process. Type IIa