

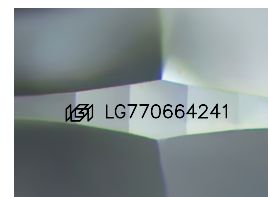
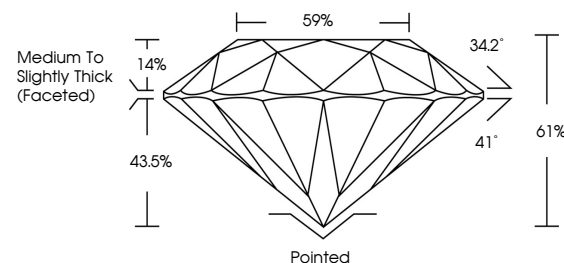


ELECTRONIC COPY

LABORATORY GROWN DIAMOND REPORT

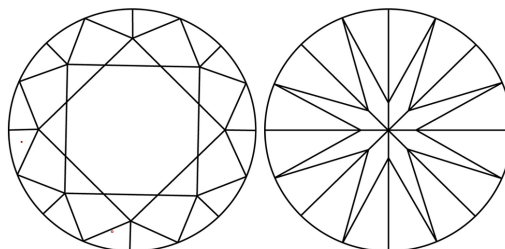
LG770664241
Report verification at igi.org

PROPORTIONS



Sample Image Used

CLARITY CHARACTERISTICS



KEY TO SYMBOLS

Red symbols indicate internal characteristics.
Green symbols indicate external characteristics.

COLOR

D E F G H I J Faint Very Light Light

CLARITY

| FL | IF | VVS ¹⁻² | VS ¹⁻² | SI ¹⁻² | I ¹⁻³ |
|----------|---------------------|-----------------------------|------------------------|-------------------|------------------|
| Flawless | Internally Flawless | Very Very Slightly Included | Very Slightly Included | Slightly Included | Included |

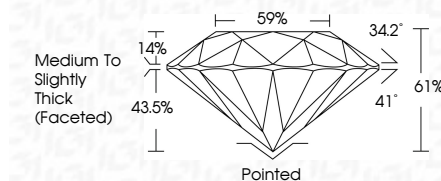
LABORATORY GROWN DIAMOND REPORT



| | |
|-------------------------|--------------------------|
| January 28, 2026 | |
| IGI Report Number | LG770664241 |
| Description | LABORATORY GROWN DIAMOND |
| Shape and Cutting Style | ROUND BRILLIANT |
| Measurements | 8.14 - 8.17 X 4.98 MM |

GRADING RESULTS

| | |
|---------------|-------------|
| Carat Weight | 2.03 CARATS |
| Color Grade | D |
| Clarity Grade | VVS 2 |
| Cut Grade | IDEAL |



ADDITIONAL GRADING INFORMATION

| | |
|--|----------------------------|
| Polish | EXCELLENT |
| Symmetry | EXCELLENT |
| Fluorescence | NONE |
| Inscription(s) | (G) LG770664241 |
| Comments: This Laboratory Grown Diamond was created by Chemical Vapor Deposition (CVD) growth process. | |
| Type IIa | |



© IGI 2020, International Gemological Institute

FD - 10 20



THIS DOCUMENT WAS PRODUCED WITH THE FOLLOWING SECURITY MEASURES: SPECIAL DOCUMENT PAPER, INK SCREENS, WATERMARK, BACKGROUND DESIGNS, HOLOGRAM AND OTHER SECURITY FEATURES NOT LISTED AND DO EXCEED DOCUMENT SECURITY INDUSTRY GUIDELINES

www.igi.org

January 28, 2026
GI Report No LG770664241
ROUND BRILLIANT

| | | | | |
|-----------------|---|-----------------------|----------------------------------|--|
| ROUND BRILLIANT |  | 3.14 - 3.17 x 4.98 MM | 2.03 CARATS | |
| | | Carat Weight | | |
| | | Color Grade | | |
| | | Clarity Grade | VVS 2 | |
| | | Cut Grade | IDEAL | |
| | | Depth | 61% | |
| | | Table | 59% | |
| | | Grades | Medium to Slightly Thick Faceted | |
| | | Culet | Pointed | |
| | | Polish | EXCELLENT | |
| Symmetry | EXCELLENT | | | |
| Fluorescence | NONE | | | |
| | | 6811277646201 | | |

Comments:
This Laboratory Grown Diamond was created by Chemical Vapor Deposition (CVD) growth process.