



ELECTRONIC COPY

LG770661316
Report verification at igi.org



February 7, 2026

IGI Report Number **LG770661316**

Description **LABORATORY GROWN DIAMOND**

Shape and Cutting Style **ROUND BRILLIANT**

Measurements **8.94 - 8.98 X 5.53 MM**

GRADING RESULTS

Carat Weight **2.72 CARATS**

Color Grade **D**

Clarity Grade **VVS 2**

Cut Grade **IDEAL**

February 7, 2026

IGI Report Number **LG770661316**

Description **LABORATORY GROWN DIAMOND**

Shape and Cutting Style **ROUND BRILLIANT**

Measurements **8.94 - 8.98 X 5.53 MM**

GRADING RESULTS

Carat Weight **2.72 CARATS**

Color Grade **D**

Clarity Grade **VVS 2**

Cut Grade **IDEAL**

ADDITIONAL GRADING INFORMATION

Polish **EXCELLENT**

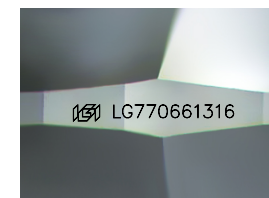
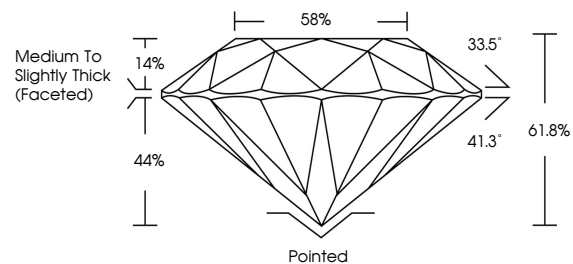
Symmetry **EXCELLENT**

Fluorescence **NONE**

Inscription(s) **LG770661316**

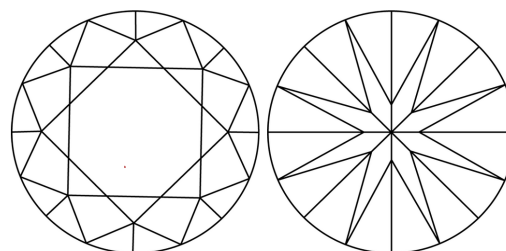
Comments: HEARTS & ARROWS
This Laboratory Grown Diamond was created by
Chemical Vapor Deposition (CVD) growth process.
Type IIa

PROPORTIONS



Sample Image Used

CLARITY CHARACTERISTICS



KEY TO SYMBOLS

Red symbols indicate internal characteristics.
Green symbols indicate external characteristics.

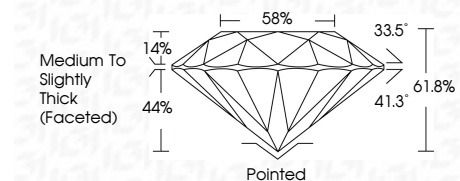


COLOR

D E F G H I J Faint Very Light Light

CLARITY

FL	IF	VVS ¹⁻²	VS ¹⁻²	SI ¹⁻²	I ¹⁻³
Flawless	Internally Flawless	Very Very Slightly Included	Very Slightly Included	Slightly Included	Included



ADDITIONAL GRADING INFORMATION

Polish **EXCELLENT**

Symmetry **EXCELLENT**

Fluorescence **NONE**

Inscription(s) **LG770661316**

Comments: HEARTS & ARROWS
This Laboratory Grown Diamond was created by
Chemical Vapor Deposition (CVD) growth process.
Type IIa



February 7, 2026	IGI Report No LG770661316	ROUND BRILLIANT	8.94 - 8.98 X 5.53 MM	2.72 CARATS	D	VVS 2	IDEAL	61.8%	58%	Medium To Slightly Thick (Faceted)	Pointed	EXCELLENT	EXCELLENT	NONE	LG770661316