



**ELECTRONIC COPY**

LG770660458  
Report verification at igi.org



February 3, 2026

IGI Report Number **LG770660458**

Description **LABORATORY GROWN DIAMOND**

Shape and Cutting Style **ROUND BRILLIANT**

Measurements **7.96 - 8.07 X 4.96 MM**

**GRADING RESULTS**

Carat Weight **1.97 CARAT**

Color Grade **E**

Clarity Grade **VS 1**

Cut Grade **IDEAL**

February 3, 2026

IGI Report Number **LG770660458**

Description **LABORATORY GROWN DIAMOND**

Shape and Cutting Style **ROUND BRILLIANT**

Measurements **7.96 - 8.07 X 4.96 MM**

**GRADING RESULTS**

Carat Weight **1.97 CARAT**

Color Grade **E**

Clarity Grade **VS 1**

Cut Grade **IDEAL**

**ADDITIONAL GRADING INFORMATION**

Polish **EXCELLENT**

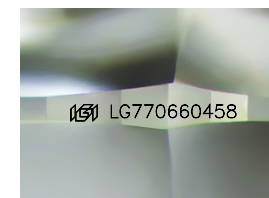
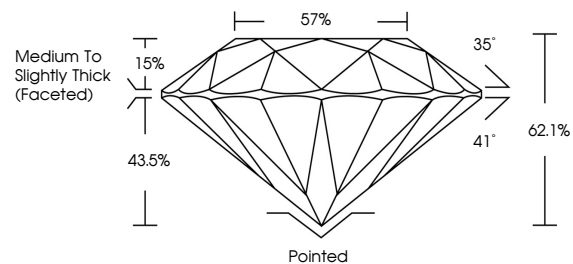
Symmetry **EXCELLENT**

Fluorescence **NONE**

Inscription(s) **IGI LG770660458**

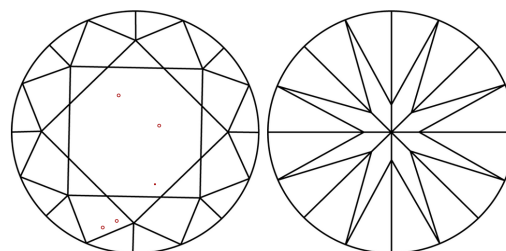
Comments: This Laboratory Grown Diamond was created by Chemical Vapor Deposition (CVD) growth process. Type IIa

**PROPORTIONS**



Sample Image Used

**CLARITY CHARACTERISTICS**



**KEY TO SYMBOLS**

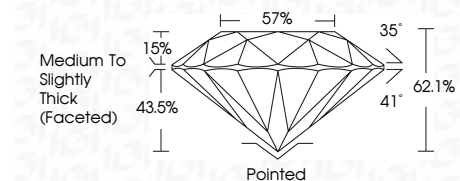
Red symbols indicate internal characteristics.  
Green symbols indicate external characteristics.

**COLOR**

D E F G H I J Faint Very Light Light

**CLARITY**

| FL       | IF                  | VS <sup>1-2</sup>           | VS <sup>1-2</sup>      | SI <sup>1-2</sup> | I <sup>1-3</sup> |
|----------|---------------------|-----------------------------|------------------------|-------------------|------------------|
| Flawless | Internally Flawless | Very Very Slightly Included | Very Slightly Included | Slightly Included | Included         |



**ADDITIONAL GRADING INFORMATION**

Polish **EXCELLENT**

Symmetry **EXCELLENT**

Fluorescence **NONE**

Inscription(s) **IGI LG770660458**

Comments: This Laboratory Grown Diamond was created by Chemical Vapor Deposition (CVD) growth process. Type IIa



**IGI**



|                       |                           |                 |               |           |       |       |        |       |                                    |          |              |                |   |                 |
|-----------------------|---------------------------|-----------------|---------------|-----------|-------|-------|--------|-------|------------------------------------|----------|--------------|----------------|---|-----------------|
| February 3, 2026      | IGI Report No LG770660458 | ROUND BRILLIANT | 1.97 CARAT    | E         | VS 1  | IDEAL | 62.1%  | 57%   | Medium To Slightly Thick (Faceted) | Pointed  | EXCELLENT    | EXCELLENT      | NONE  | IGI LG770660458 |
| 7.96 - 8.07 X 4.96 MM | Carat Weight              | Color Grade     | Clarity Grade | Cut Grade | Depth | Table | Girdle | Culet | Polish                             | Symmetry | Fluorescence | Inscription(s) | Comments: This Laboratory Grown Diamond was created by Chemical Vapor Deposition (CVD) growth process. Type IIa |                 |