



ELECTRONIC COPY

LG770653118
Report verification at igi.org



February 17, 2026
IGI Report Number **LG770653118**
Description **LABORATORY GROWN DIAMOND**
Shape and Cutting Style **SQUARE CUSHION MODIFIED BRILLIANT**
Measurements **7.87 X 7.71 X 5.00 MM**
GRADING RESULTS
Carat Weight **2.73 CARATS**
Color Grade **FANCY INTENSE PINK**
Clarity Grade **VVS 2**

February 17, 2026
IGI Report Number **LG770653118**
Description **LABORATORY GROWN DIAMOND**
Shape and Cutting Style **SQUARE CUSHION MODIFIED BRILLIANT**
Measurements **7.87 X 7.71 X 5.00 MM**

GRADING RESULTS

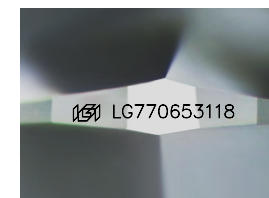
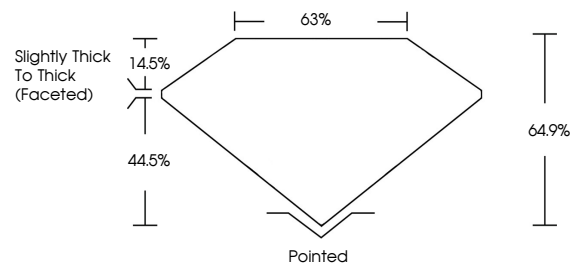
Carat Weight **2.73 CARATS**
Color Grade **FANCY INTENSE PINK**
Clarity Grade **VVS 2**

ADDITIONAL GRADING INFORMATION

Polish **VERY GOOD**
Symmetry **EXCELLENT**
Fluorescence **SLIGHT**
Inscription(s) **IGI LG770653118**

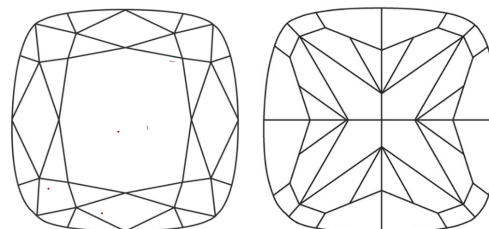
Comments: This Laboratory Grown Diamond was created by Chemical Vapor Deposition (CVD) growth process. Indications of post-growth treatment.

PROPORTIONS



Sample Image Used

CLARITY CHARACTERISTICS



KEY TO SYMBOLS

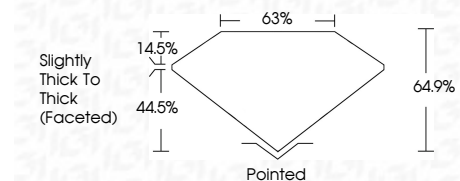
Red symbols indicate internal characteristics.
Green symbols indicate external characteristics.

COLOR

D E F G H I J Faint Very Light Light

CLARITY

FL	IF	VVS ¹⁻²	VS ¹⁻²	SI ¹⁻²	I ¹⁻³
Flawless	Internally Flawless	Very Very Slightly Included	Very Slightly Included	Slightly Included	Included



ADDITIONAL GRADING INFORMATION

Polish **VERY GOOD**
Symmetry **EXCELLENT**
Fluorescence **SLIGHT**
Inscription(s) **IGI LG770653118**
Comments: This Laboratory Grown Diamond was created by Chemical Vapor Deposition (CVD) growth process. Indications of post-growth treatment.



IGI



February 17, 2026
IGI Report No LG770653118
SQUARE CUSHION MODIFIED BRILLIANT
7.87 X 7.71 X 5.00 MM
2.73 CARATS
FANCY INTENSE PINK
VVS 2
64.9%
63%
Slightly Thick To Thick (Faceted)
Pointed
VERY GOOD
EXCELLENT
SLIGHT
IGI LG770653118

Comments: This Laboratory Grown Diamond was created by Chemical Vapor Deposition (CVD) growth process. Indications of post-growth treatment.