



**LABORATORY GROWN DIAMOND REPORT**

February 17, 2026  
 IGI Report Number **LG770652798**  
 Description **LABORATORY GROWN DIAMOND**  
 Shape and Cutting Style **HEART MODIFIED BRILLIANT**  
 Measurements **5.14 X 5.46 X 3.26 MM**

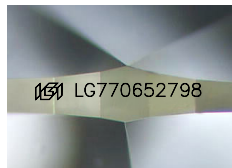
**GRADING RESULTS**

Carat Weight **0.70 CARAT**  
 Color Grade **FANCY PINKISH BROWN**  
 Clarity Grade **VVS 2**

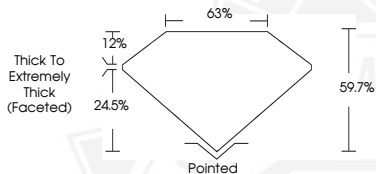
**ADDITIONAL GRADING INFORMATION**

Polish **VERY GOOD**  
 Symmetry **VERY GOOD**  
 Fluorescence **SLIGHT**  
 Inscription(s) **IGI LG770652798**

Comments: This Laboratory Grown Diamond was created by Chemical Vapor Deposition (CVD) growth process. Indications of post-growth treatment.



Sample Image Used



February 17, 2026  
 IGI Report Number **LG770652798**  
 HEART MODIFIED BRILLIANT  
 LABORATORY GROWN DIAMOND  
 5.14 X 5.46 X 3.26 MM  
 Carat Weight **0.70 CARAT**  
 Color Grade **FANCY PINKISH BROWN**  
 Clarity Grade **VVS 2**  
 Polish **VERY GOOD**  
 Symmetry **VERY GOOD**  
 Fluorescence **SLIGHT**  
 Inscription(s) **IGI LG770652798**

Comments: This Laboratory Grown Diamond was created by Chemical Vapor Deposition (CVD) growth process. Indications of post-growth treatment.



February 17, 2026  
 IGI Report Number **LG770652798**  
 HEART MODIFIED BRILLIANT  
 LABORATORY GROWN DIAMOND  
 5.14 X 5.46 X 3.26 MM  
 Carat Weight **0.70 CARAT**  
 Color Grade **FANCY PINKISH BROWN**  
 Clarity Grade **VVS 2**  
 Polish **VERY GOOD**  
 Symmetry **VERY GOOD**  
 Fluorescence **SLIGHT**  
 Inscription(s) **IGI LG770652798**

Comments: This Laboratory Grown Diamond was created by Chemical Vapor Deposition (CVD) growth process. Indications of post-growth treatment.



THIS DOCUMENT WAS PRODUCED WITH THE FOLLOWING SECURITY MEASURES: SPECIAL DOCUMENT PAPER, INK SCREENS, WATERMARK, BACKGROUND DESIGNS, HOLOGRAM AND OTHER SECURITY FEATURES NOT LISTED AND DO EXCEED DOCUMENT SECURITY INDUSTRY GUIDELINES.