



LABORATORY GROWN DIAMOND REPORT

February 17, 2026
 IGI Report Number **LG770652787**
 Description **LABORATORY GROWN DIAMOND**
 Shape and Cutting Style **HEART MODIFIED BRILLIANT**
 Measurements **3.76 X 4.51 X 2.61 MM**

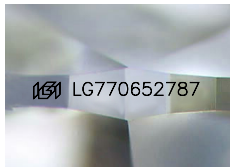
GRADING RESULTS

Carat Weight **0.35 CARAT**
 Color Grade **FANCY INTENSE PINKISH BROWN**
 Clarity Grade **VVS 2**

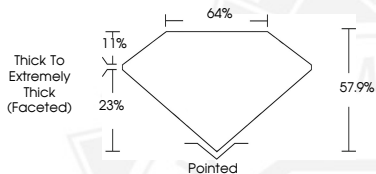
ADDITIONAL GRADING INFORMATION

Polish **VERY GOOD**
 Symmetry **VERY GOOD**
 Fluorescence **SLIGHT**
 Inscription(s) **IGI LG770652787**

Comments: This Laboratory Grown Diamond was created by Chemical Vapor Deposition (CVD) growth process. Indications of post-growth treatment.



Sample Image Used



February 17, 2026
 IGI Report Number **LG770652787**
 HEART MODIFIED BRILLIANT
 LABORATORY GROWN DIAMOND
 3.76 X 4.51 X 2.61 MM
 Carat Weight **0.35 CARAT**
 Color Grade **FANCY INTENSE PINKISH BROWN**
 Clarity Grade **VVS 2**
 Polish **VERY GOOD**
 Symmetry **VERY GOOD**
 Fluorescence **SLIGHT**
 Inscription(s) **IGI LG770652787**
 Comments: This Laboratory Grown Diamond was created by Chemical Vapor Deposition (CVD) growth process. Indications of post-growth treatment.



February 17, 2026
 IGI Report Number **LG770652787**
 HEART MODIFIED BRILLIANT
 LABORATORY GROWN DIAMOND
 3.76 X 4.51 X 2.61 MM
 Carat Weight **0.35 CARAT**
 Color Grade **FANCY INTENSE PINKISH BROWN**
 Clarity Grade **VVS 2**
 Polish **VERY GOOD**
 Symmetry **VERY GOOD**
 Fluorescence **SLIGHT**
 Inscription(s) **IGI LG770652787**
 Comments: This Laboratory Grown Diamond was created by Chemical Vapor Deposition (CVD) growth process. Indications of post-growth treatment.



THIS DOCUMENT WAS PRODUCED WITH THE FOLLOWING SECURITY MEASURES: SPECIAL DOCUMENT PAPER, INK SCREENS, WATERMARK, BACKGROUND DESIGNS, HOLOGRAM AND OTHER SECURITY FEATURES NOT LISTED AND DO EXCEED DOCUMENT SECURITY INDUSTRY GUIDELINES.