



ELECTRONIC COPY

LG770652075
Report verification at igi.org



February 12, 2026
IGI Report Number **LG770652075**
Description **LABORATORY GROWN DIAMOND**
Shape and Cutting Style **CUSHION MODIFIED BRILLIANT**
Measurements **9.10 X 6.99 X 4.47 MM**
GRADING RESULTS
Carat Weight **2.64 CARATS**
Color Grade **FANCY INTENSE BROWNISH ORANGE**
Clarity Grade **VS 2**

February 12, 2026
IGI Report Number **LG770652075**
Description **LABORATORY GROWN DIAMOND**
Shape and Cutting Style **CUSHION MODIFIED BRILLIANT**
Measurements **9.10 X 6.99 X 4.47 MM**

GRADING RESULTS

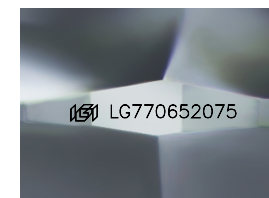
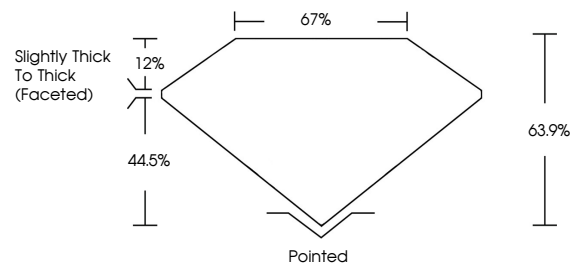
Carat Weight **2.64 CARATS**
Color Grade **FANCY INTENSE BROWNISH ORANGE**
Clarity Grade **VS 2**

ADDITIONAL GRADING INFORMATION

Polish **EXCELLENT**
Symmetry **EXCELLENT**
Fluorescence **SLIGHT**
Inscription(s) **IGI LG770652075**

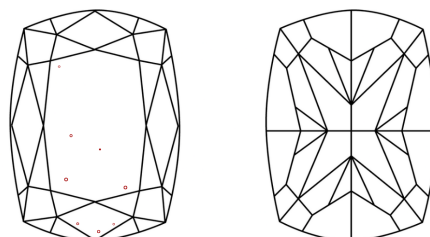
Comments: This Laboratory Grown Diamond was created by Chemical Vapor Deposition (CVD) growth process. Indications of post-growth treatment.

PROPORTIONS



Sample Image Used

CLARITY CHARACTERISTICS



KEY TO SYMBOLS

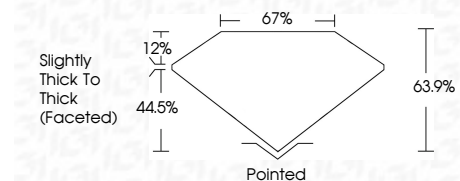
Red symbols indicate internal characteristics.
Green symbols indicate external characteristics.

COLOR

D E F G H I J Faint Very Light Light

CLARITY

FL	IF	VS ¹⁻²	VS ¹⁻²	SI ¹⁻²	I ¹⁻³
Flawless	Internally Flawless	Very Very Slightly Included	Very Slightly Included	Slightly Included	Included



ADDITIONAL GRADING INFORMATION

Polish **EXCELLENT**
Symmetry **EXCELLENT**
Fluorescence **SLIGHT**
Inscription(s) **IGI LG770652075**
Comments: This Laboratory Grown Diamond was created by Chemical Vapor Deposition (CVD) growth process. Indications of post-growth treatment.



February 12, 2026
IGI Report No **LG770652075**
CUSHION MODIFIED BRILLIANT
9.10 X 6.99 X 4.47 MM
2.64 CARATS
Carat Weight
Color Grade **FANCY INTENSE BROWNISH ORANGE**
Clarity Grade **VS 2**
Depth **63.9%**
Table **67%**
Girdle **Slightly Thick to Thick (Faceted)**
Culet **Pointed**
Polish **EXCELLENT**
Symmetry **EXCELLENT**
Fluorescence **SLIGHT**
Inscription(s) **IGI LG770652075**
Comments: This Laboratory Grown Diamond was created by Chemical Vapor Deposition (CVD) growth process. Indications of post-growth treatment.