



ELECTRONIC COPY

LG770651991
Report verification at igi.org



February 11, 2026
IGI Report Number **LG770651991**
Description **LABORATORY GROWN DIAMOND**
Shape and Cutting Style **CUSHION MODIFIED BRILLIANT**
Measurements **8.39 X 6.36 X 4.47 MM**
GRADING RESULTS
Carat Weight **2.16 CARATS**
Color Grade **FANCY ORANGY BROWN**
Clarity Grade **VS 1**

LABORATORY GROWN DIAMOND REPORT

February 11, 2026
IGI Report Number **LG770651991**
Description **LABORATORY GROWN DIAMOND**
Shape and Cutting Style **CUSHION MODIFIED BRILLIANT**
Measurements **8.39 X 6.36 X 4.47 MM**

GRADING RESULTS

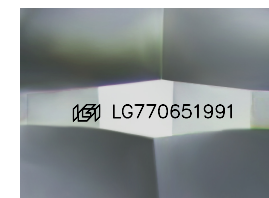
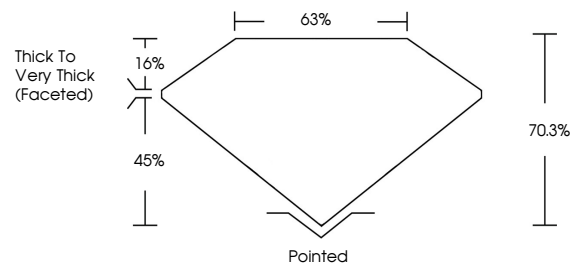
Carat Weight **2.16 CARATS**
Color Grade **FANCY ORANGY BROWN**
Clarity Grade **VS 1**

ADDITIONAL GRADING INFORMATION

Polish **EXCELLENT**
Symmetry **EXCELLENT**
Fluorescence **SLIGHT**
Inscription(s) **IGI LG770651991**

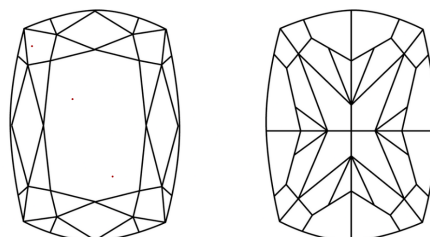
Comments: This Laboratory Grown Diamond was created by Chemical Vapor Deposition (CVD) growth process.
Indications of post-growth treatment.

PROPORTIONS



Sample Image Used

CLARITY CHARACTERISTICS



KEY TO SYMBOLS

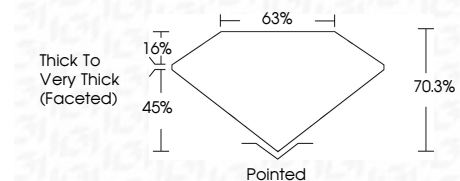
Red symbols indicate internal characteristics.
Green symbols indicate external characteristics.

COLOR

D E F G H I J Faint Very Light Light

CLARITY

FL	IF	VS ¹⁻²	VS ¹⁻²	SI ¹⁻²	I ¹⁻³
Flawless	Internally Flawless	Very Very Slightly Included	Very Slightly Included	Slightly Included	Included



ADDITIONAL GRADING INFORMATION

Polish **EXCELLENT**
Symmetry **EXCELLENT**
Fluorescence **SLIGHT**
Inscription(s) **IGI LG770651991**
Comments: This Laboratory Grown Diamond was created by Chemical Vapor Deposition (CVD) growth process.
Indications of post-growth treatment.



February 11, 2026
IGI Report No LG770651991
CUSHION MODIFIED BRILLIANT
8.39 X 6.36 X 4.47 MM
2.16 CARATS
FANCY ORANGY BROWN
VS 1
70.3%
Thick to Very Thick (Faceted)
Pointed
EXCELLENT
EXCELLENT
SLIGHT
IGI LG770651991
Comments: This Laboratory Grown Diamond was created by Chemical Vapor Deposition (CVD) growth process.
Indications of post-growth treatment.