



ELECTRONIC COPY

LG770651983
Report verification at igi.org



February 11, 2026
IGI Report Number **LG770651983**
Description **LABORATORY GROWN DIAMOND**
Shape and Cutting Style **CUSHION MODIFIED BRILLIANT**
Measurements **8.10 X 5.78 X 3.93 MM**
GRADING RESULTS
Carat Weight **1.69 CARAT**
Color Grade **FANCY INTENSE PINK**
Clarity Grade **VS 1**

February 11, 2026
IGI Report Number **LG770651983**
Description **LABORATORY GROWN DIAMOND**
Shape and Cutting Style **CUSHION MODIFIED BRILLIANT**
Measurements **8.10 X 5.78 X 3.93 MM**

GRADING RESULTS

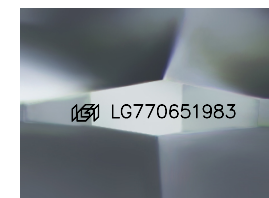
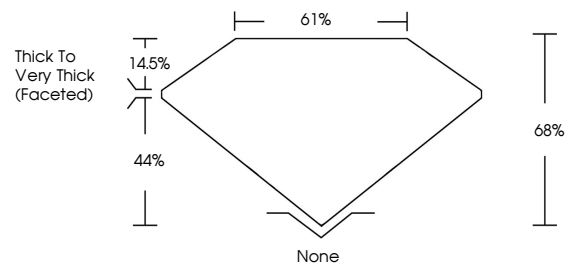
Carat Weight **1.69 CARAT**
Color Grade **FANCY INTENSE PINK**
Clarity Grade **VS 1**

ADDITIONAL GRADING INFORMATION

Polish **EXCELLENT**
Symmetry **EXCELLENT**
Fluorescence **SLIGHT**
Inscription(s) **LG770651983**

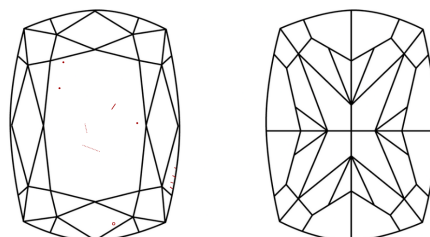
Comments: This Laboratory Grown Diamond was created by Chemical Vapor Deposition (CVD) growth process.
Indications of post-growth treatment.

PROPORTIONS



Sample Image Used

CLARITY CHARACTERISTICS



KEY TO SYMBOLS

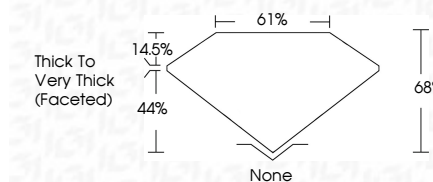
Red symbols indicate internal characteristics.
Green symbols indicate external characteristics.

COLOR

D E F G H I J Faint Very Light Light

CLARITY

| FL | IF | VS ¹⁻² | VS ¹⁻² | SI ¹⁻² | I ¹⁻³ |
|----------|---------------------|-----------------------------|------------------------|-------------------|------------------|
| Flawless | Internally Flawless | Very Very Slightly Included | Very Slightly Included | Slightly Included | Included |



ADDITIONAL GRADING INFORMATION

Polish **EXCELLENT**
Symmetry **EXCELLENT**
Fluorescence **SLIGHT**
Inscription(s) **LG770651983**
Comments: This Laboratory Grown Diamond was created by Chemical Vapor Deposition (CVD) growth process.
Indications of post-growth treatment.



February 11, 2026
IGI Report No **LG770651983**
CUSHION MODIFIED BRILLIANT
8.10 X 5.78 X 3.93 MM
1.69 CARAT
FANCY INTENSE PINK
VS 1
68%
61%
Thick to Very Thick (Faceted)
None
EXCELLENT
EXCELLENT
SLIGHT
IGI LG770651983
Comments: This Laboratory Grown Diamond was created by Chemical Vapor Deposition (CVD) growth process.
Indications of post-growth treatment.