



ELECTRONIC COPY

LG770649049
Report verification at igi.org



February 16, 2026

IGI Report Number **LG770649049**

Description **LABORATORY GROWN DIAMOND**

Shape and Cutting Style **OVAL BRILLIANT**

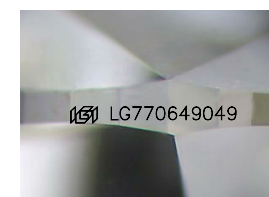
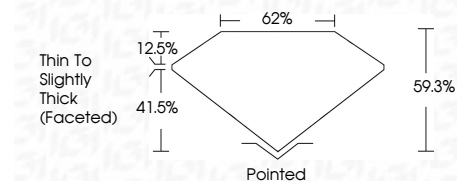
Measurements **9.17 X 6.07 X 3.60 MM**

GRADING RESULTS

Carat Weight **1.25 CARAT**

Color Grade **D**

Clarity Grade **VVS 1**



Sample Image Used

ADDITIONAL GRADING INFORMATION

Polish **EXCELLENT**

Symmetry **EXCELLENT**

Fluorescence **NONE**

Inscription(s) **IGI LG770649049**

Comments: As Grown - No indication of post-growth treatment.

This Laboratory Grown Diamond was created by High Pressure High Temperature (HPHT) growth process.

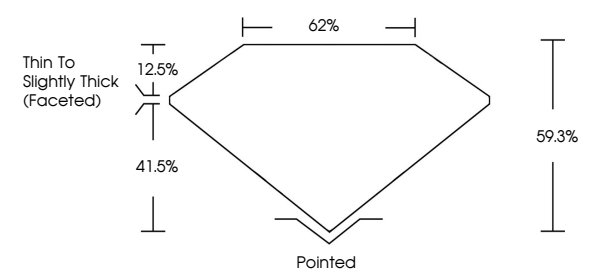
Type II



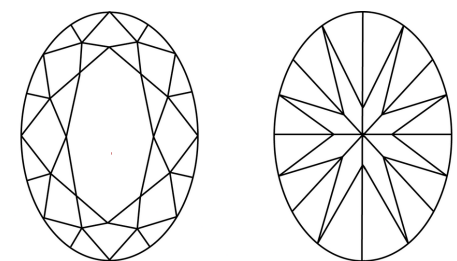
February 16, 2026	IGI Report No LG770649049	1.25 CARAT	D
OVAL BRILLIANT	9.17 X 6.07 X 3.60 MM	VVS 1	60%
Carat Weight	Color Grade	Depth	62%
Clarity Grade	Table	Grailes	Thin To Slightly Thick (Faceted)
Polish	Symmetry	Fluorescence	Pointed
EXCELLENT	EXCELLENT	NONE	EXCELLENT
EXCELLENT	EXCELLENT	NONE	NONE
Inscription(s)	IGI LG770649049		

Comments: As Grown - No indication of post-growth treatment. This Laboratory Grown Diamond was created by High Pressure High Temperature (HPHT) growth process. Type II

PROPORTIONS



CLARITY CHARACTERISTICS



KEY TO SYMBOLS

Red symbols indicate internal characteristics.
Green symbols indicate external characteristics.

COLOR

D	E	F	G	H	I	J	Faint	Very Light	Light
---	---	---	---	---	---	---	-------	------------	-------

CLARITY

FL	IF	VVS ¹⁻²	VS ¹⁻²	SI ¹⁻²	I ¹⁻³
Flawless	Internally Flawless	Very Very Slightly Included	Very Slightly Included	Slightly Included	Included



February 16, 2026
IGI Report Number **LG770649049**
Description **LABORATORY GROWN DIAMOND**
Shape and Cutting Style **OVAL BRILLIANT**
Measurements **9.17 X 6.07 X 3.60 MM**
GRADING RESULTS
Carat Weight **1.25 CARAT**
Color Grade **D**
Clarity Grade **VVS 1**
ADDITIONAL GRADING INFORMATION
Polish **EXCELLENT**
Symmetry **EXCELLENT**
Fluorescence **NONE**
Inscription(s) **IGI LG770649049**

Comments: As Grown - No indication of post-growth treatment.
This Laboratory Grown Diamond was created by High Pressure High Temperature (HPHT) growth process.
Type II