



ELECTRONIC COPY

LG770645125
Report verification at igi.org



March 17, 2026
IGI Report Number **LG770645125**
Description **LABORATORY GROWN DIAMOND**
Shape and Cutting Style **PRINCESS CUT**
Measurements **6.03 X 5.97 X 4.02 MM**
GRADING RESULTS
Carat Weight **1.27 CARAT**
Color Grade **FANCY INTENSE BLUE**
Clarity Grade **VVS 2**

March 17, 2026
IGI Report Number **LG770645125**
Description **LABORATORY GROWN DIAMOND**
Shape and Cutting Style **PRINCESS CUT**
Measurements **6.03 X 5.97 X 4.02 MM**

GRADING RESULTS

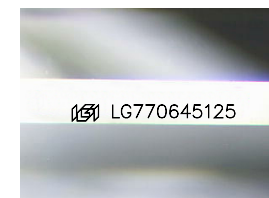
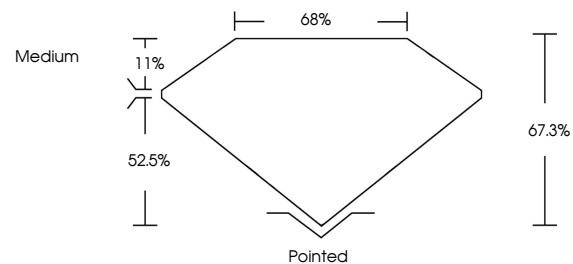
Carat Weight **1.27 CARAT**
Color Grade **FANCY INTENSE BLUE**
Clarity Grade **VVS 2**

ADDITIONAL GRADING INFORMATION

Polish **EXCELLENT**
Symmetry **EXCELLENT**
Fluorescence **NONE**
Inscription(s) **IGI LG770645125**

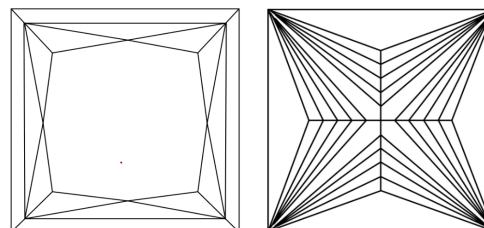
Comments: This Laboratory Grown Diamond was created by Chemical Vapor Deposition (CVD) growth process.
Indications of post-growth treatment.

PROPORTIONS



Sample Image Used

CLARITY CHARACTERISTICS



KEY TO SYMBOLS

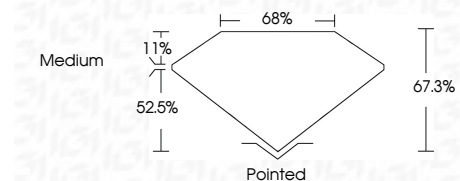
Red symbols indicate internal characteristics.
Green symbols indicate external characteristics.

COLOR

D E F G H I J Faint Very Light Light

CLARITY

FL	IF	VVS ¹⁻²	VS ¹⁻²	SI ¹⁻²	I ¹⁻³
Flawless	Internally Flawless	Very Very Slightly Included	Very Slightly Included	Slightly Included	Included



ADDITIONAL GRADING INFORMATION

Polish **EXCELLENT**
Symmetry **EXCELLENT**
Fluorescence **NONE**
Inscription(s) **IGI LG770645125**
Comments: This Laboratory Grown Diamond was created by Chemical Vapor Deposition (CVD) growth process.
Indications of post-growth treatment.



March 17, 2026
IGI Report No LG770645125
PRINCESS CUT
1.27 CARAT
6.03 X 5.97 X 4.02 MM
Color Grade **FANCY INTENSE BLUE**
Clarity Grade **VVS 2**
Depth **52.5%**
Table **11%**
Girdle **Medium**
Culet **Pointed**
Polish **EXCELLENT**
Symmetry **EXCELLENT**
Fluorescence **NONE**
Inscription(s) **IGI LG770645125**
Comments: This Laboratory Grown Diamond was created by Chemical Vapor Deposition (CVD) growth process.
Indications of post-growth treatment.