



ELECTRONIC COPY

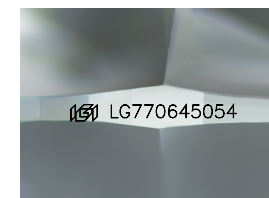
LG770645054
Report verification at igi.org



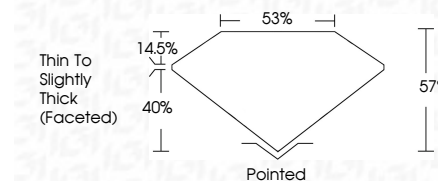
April 7, 2026
IGI Report Number **LG770645054**
Description **LABORATORY GROWN DIAMOND**
Shape and Cutting Style **ROUND MODIFIED BRILLIANT**
Measurements **6.91 - 6.96 X 3.97 MM**

GRADING RESULTS

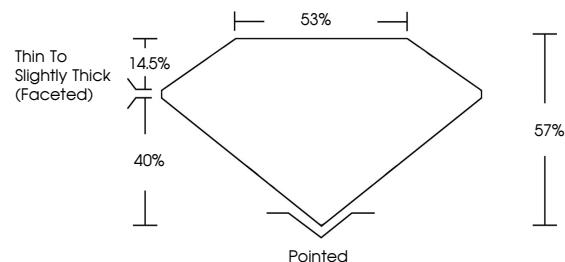
Carat Weight **1.24 CARAT**
Color Grade **FANCY INTENSE PINK**
Clarity Grade **VVS 2**



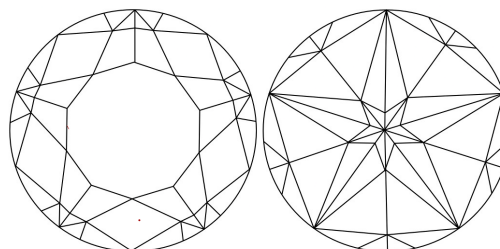
Sample Image Used



PROPORTIONS



CLARITY CHARACTERISTICS



KEY TO SYMBOLS

Red symbols indicate internal characteristics.
Green symbols indicate external characteristics.

COLOR

D E F G H I J Faint Very Light Light

CLARITY

FL	IF	VS ¹⁻²	VS ¹⁻²	SI ¹⁻²	I ¹⁻³
Flawless	Internally Flawless	Very Very Slightly Included	Very Slightly Included	Slightly Included	Included

ADDITIONAL GRADING INFORMATION

Polish **VERY GOOD**
Symmetry **VERY GOOD**
Fluorescence **SLIGHT**
Inscription(s) **(IGI) LG770645054**

Comments: This Laboratory Grown Diamond was created by Chemical Vapor Deposition (CVD) growth process. Indications of post-growth treatment.



April 7, 2026
IGI Report No **LG770645054**
ROUND MODIFIED BRILLIANT
1.24 CARAT
Carat Weight **FANCY INTENSE PINK**
Color Grade **VVS 2**
Depth **57%**
Table **55%**
Girdle **Thin To Slightly Thick (Faceted)**
Culet **Pointed**
Polish **VERY GOOD**
Symmetry **VERY GOOD**
Fluorescence **SLIGHT**
Inscription(s) **(IGI) LG770645054**
Comments: This Laboratory Grown Diamond was created by Chemical Vapor Deposition (CVD) growth process. Indications of post-growth treatment.