



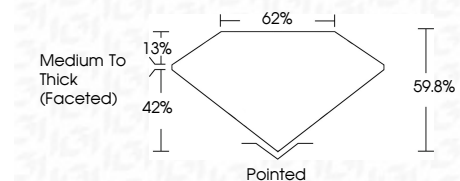
ELECTRONIC COPY

LG770645039
Report verification at igi.org



March 7, 2026
IGI Report Number **LG770645039**
Description **LABORATORY GROWN DIAMOND**
Shape and Cutting Style **PEAR MODIFIED BRILLIANT**
Measurements **9.59 X 5.69 X 3.40 MM**

GRADING RESULTS
Carat Weight **1.27 CARAT**
Color Grade **FANCY LIGHT BLUISH GREEN**
Clarity Grade **VVS 2**



ADDITIONAL GRADING INFORMATION
Polish **EXCELLENT**
Symmetry **EXCELLENT**
Fluorescence **NONE**
Inscription(s) **IGI LG770645039**
Comments: This Laboratory Grown Diamond was created by Chemical Vapor Deposition (CVD) growth process. Indications of post-growth treatment.



March 7, 2026
IGI Report No **LG770645039**
PEAR MODIFIED BRILLIANT
1.27 CARAT
Carat Weight
Color Grade **FANCY LIGHT BLUISH GREEN**
Clarity Grade **VVS 2**
Depth **59.8%**
Table **42%**
Girdle **Medium To Thick (Faceted)**
Culet **Pointed**
Polish **EXCELLENT**
Symmetry **EXCELLENT**
Fluorescence **NONE**
Inscription(s) **IGI LG770645039**
Comments: This Laboratory Grown Diamond was created by Chemical Vapor Deposition (CVD) growth process. Indications of post-growth treatment.

LABORATORY GROWN DIAMOND REPORT

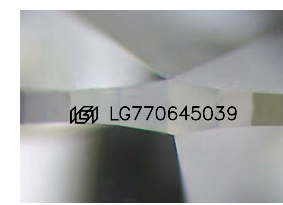
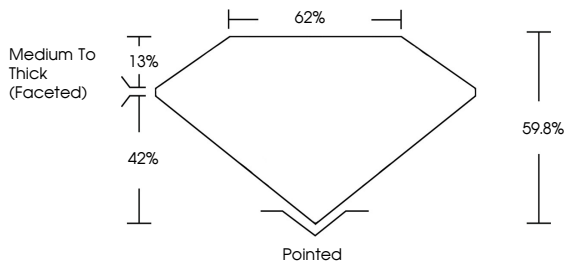
March 7, 2026
IGI Report Number **LG770645039**
Description **LABORATORY GROWN DIAMOND**
Shape and Cutting Style **PEAR MODIFIED BRILLIANT**
Measurements **9.59 X 5.69 X 3.40 MM**

GRADING RESULTS
Carat Weight **1.27 CARAT**
Color Grade **FANCY LIGHT BLUISH GREEN**
Clarity Grade **VVS 2**

ADDITIONAL GRADING INFORMATION
Polish **EXCELLENT**
Symmetry **EXCELLENT**
Fluorescence **NONE**
Inscription(s) **IGI LG770645039**

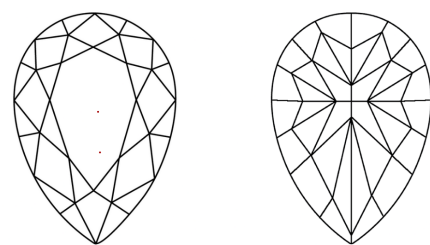
Comments: This Laboratory Grown Diamond was created by Chemical Vapor Deposition (CVD) growth process. Indications of post-growth treatment.

PROPORTIONS



Sample Image Used

CLARITY CHARACTERISTICS



KEY TO SYMBOLS
Red symbols indicate internal characteristics.
Green symbols indicate external characteristics.

COLOR

| | | | | | | | | | |
|---|---|---|---|---|---|---|-------|------------|-------|
| D | E | F | G | H | I | J | Faint | Very Light | Light |
|---|---|---|---|---|---|---|-------|------------|-------|

CLARITY

| | | | | | |
|----------|---------------------|-----------------------------|------------------------|-------------------|------------------|
| FL | IF | VVS ¹⁻² | VS ¹⁻² | SI ¹⁻² | I ¹⁻³ |
| Flawless | Internally Flawless | Very Very Slightly Included | Very Slightly Included | Slightly Included | Included |

