



**ELECTRONIC COPY**

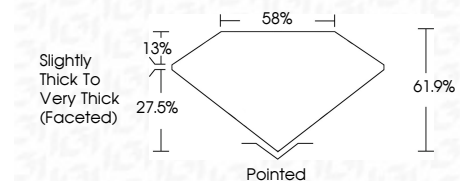
LG770644067  
Report verification at [igi.org](http://igi.org)



February 25, 2026  
IGI Report Number **LG770644067**  
Description **LABORATORY GROWN DIAMOND**

Shape and Cutting Style **PEAR MODIFIED BRILLIANT**  
Measurements **9.72 X 6.04 X 3.74 MM**

**GRADING RESULTS**  
Carat Weight **1.57 CARAT**  
Color Grade **FANCY VIVID YELLOW**  
Clarity Grade **VVS 2**



**ADDITIONAL GRADING INFORMATION**  
Polish **EXCELLENT**  
Symmetry **EXCELLENT**  
Fluorescence **NONE**  
Inscription(s) **IGI LG770644067**  
Comments: As Grown - No indication of post-growth treatment.  
This Laboratory Grown Diamond was created by High Pressure High Temperature (HPHT) growth process.



February 25, 2026  
IGI Report No **LG770644067**  
**PEAR MODIFIED BRILLIANT**  
Carat Weight **1.57 CARAT**  
Color Grade **FANCY VIVID YELLOW**  
Clarity Grade **VVS 2**  
Depth **61.9%**  
Table **27.5%**  
Girdle **Slightly Thick To Very Thick (Faceted)**  
Culet **Pointed**  
Polish **EXCELLENT**  
Symmetry **EXCELLENT**  
Fluorescence **NONE**  
Inscription(s) **IGI LG770644067**  
Comments: As Grown - No indication of post-growth treatment.  
This Laboratory Grown Diamond was created by High Pressure High Temperature (HPHT) growth process.

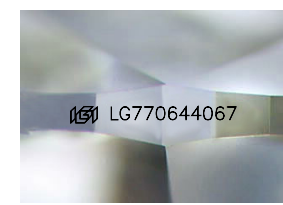
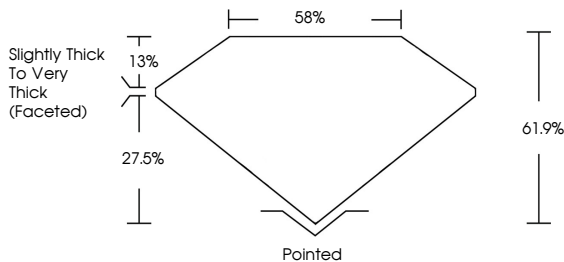
February 25, 2026  
IGI Report Number **LG770644067**  
Description **LABORATORY GROWN DIAMOND**  
Shape and Cutting Style **PEAR MODIFIED BRILLIANT**  
Measurements **9.72 X 6.04 X 3.74 MM**

**GRADING RESULTS**  
Carat Weight **1.57 CARAT**  
Color Grade **FANCY VIVID YELLOW**  
Clarity Grade **VVS 2**

**ADDITIONAL GRADING INFORMATION**  
Polish **EXCELLENT**  
Symmetry **EXCELLENT**  
Fluorescence **NONE**  
Inscription(s) **IGI LG770644067**

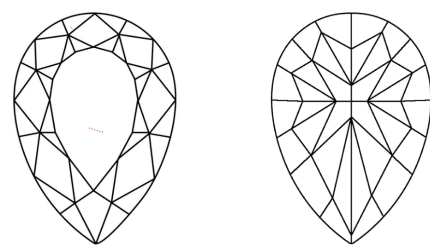
Comments: As Grown - No indication of post-growth treatment.  
This Laboratory Grown Diamond was created by High Pressure High Temperature (HPHT) growth process.

**PROPORTIONS**



Sample Image Used

**CLARITY CHARACTERISTICS**



**KEY TO SYMBOLS**  
Red symbols indicate internal characteristics.  
Green symbols indicate external characteristics.

**COLOR**

D	E	F	G	H	I	J	Faint	Very Light	Light
---	---	---	---	---	---	---	-------	------------	-------

**CLARITY**

FL	IF	VVS <sup>1-2</sup>	VS <sup>1-2</sup>	SI <sup>1-2</sup>	I <sup>1-3</sup>
Flawless	Internally Flawless	Very Very Slightly Included	Very Slightly Included	Slightly Included	Included

