



ELECTRONIC COPY

LG770636646
Report verification at igi.org



April 11, 2026
IGI Report Number **LG770636646**
Description **LABORATORY GROWN DIAMOND**
Shape and Cutting Style **CUSHION MODIFIED BRILLIANT**
Measurements **7.70 X 6.01 X 4.16 MM**
GRADING RESULTS
Carat Weight **1.52 CARAT**
Color Grade **FANCY INTENSE PINK**
Clarity Grade **VVS 1**

April 11, 2026
IGI Report Number **LG770636646**
Description **LABORATORY GROWN DIAMOND**
Shape and Cutting Style **CUSHION MODIFIED BRILLIANT**
Measurements **7.70 X 6.01 X 4.16 MM**

GRADING RESULTS

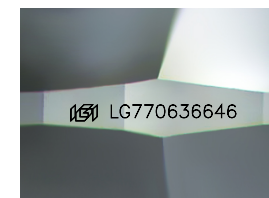
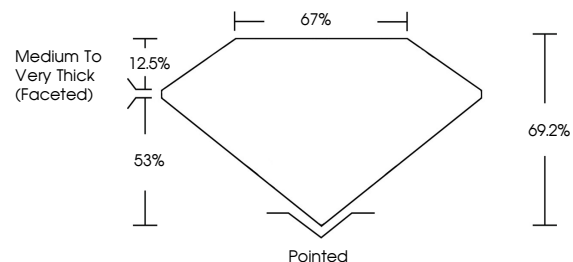
Carat Weight **1.52 CARAT**
Color Grade **FANCY INTENSE PINK**
Clarity Grade **VVS 1**

ADDITIONAL GRADING INFORMATION

Polish **VERY GOOD**
Symmetry **EXCELLENT**
Fluorescence **SLIGHT**
Inscription(s) **IGI LG770636646**

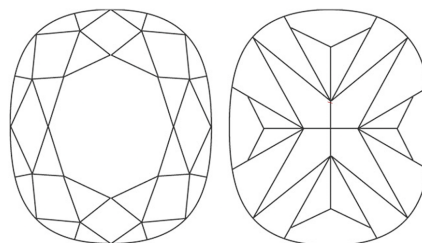
Comments: This Laboratory Grown Diamond was created by High Pressure High Temperature (HPHT) growth process. Indications of post-growth treatment.

PROPORTIONS



Sample Image Used

CLARITY CHARACTERISTICS



KEY TO SYMBOLS

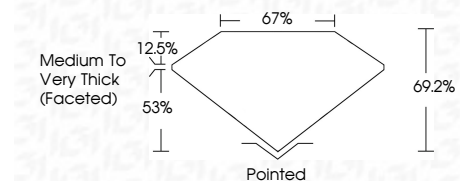
Red symbols indicate internal characteristics.
Green symbols indicate external characteristics.

COLOR

D E F G H I J Faint Very Light Light

CLARITY

FL	IF	VVS ¹⁻²	VS ¹⁻²	SI ¹⁻²	I ¹⁻³
Flawless	Internally Flawless	Very Very Slightly Included	Very Slightly Included	Slightly Included	Included



ADDITIONAL GRADING INFORMATION

Polish **VERY GOOD**
Symmetry **EXCELLENT**
Fluorescence **SLIGHT**
Inscription(s) **IGI LG770636646**
Comments: This Laboratory Grown Diamond was created by High Pressure High Temperature (HPHT) growth process. Indications of post-growth treatment.



IGI



April 11, 2026
IGI Report No **LG770636646**
CUSHION MODIFIED BRILLIANT
1.52 CARAT
Carat Weight
Color Grade **FANCY INTENSE PINK**
Clarity Grade **VVS 1**
Depth **69.2%**
Table **67%**
Girdle **Medium to Very Thick (Faceted)**
Culet **Pointed**
Polish **VERY GOOD**
Symmetry **EXCELLENT**
Fluorescence **SLIGHT**
Inscription(s) **IGI LG770636646**

Comments: This Laboratory Grown Diamond was created by High Pressure High Temperature (HPHT) growth process. Indications of post-growth treatment.