



ELECTRONIC COPY

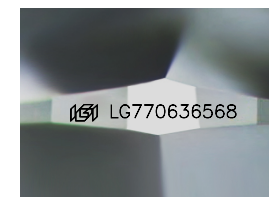
LG770636568
Report verification at igi.org



April 24, 2026
IGI Report Number **LG770636568**
Description **LABORATORY GROWN DIAMOND**

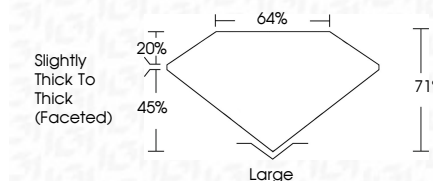
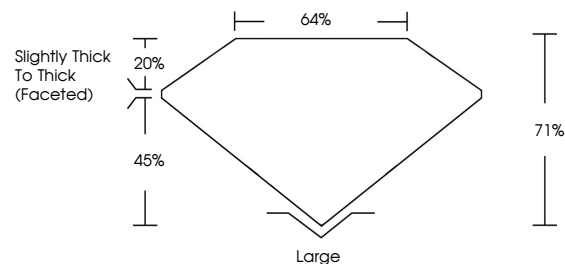
Shape and Cutting Style **ANTIQUÉ CUSHION CUT**
Measurements **6.99 X 6.92 X 4.91 MM**

GRADING RESULTS
Carat Weight **2.01 CARATS**
Color Grade **F**
Clarity Grade **VVS 2**

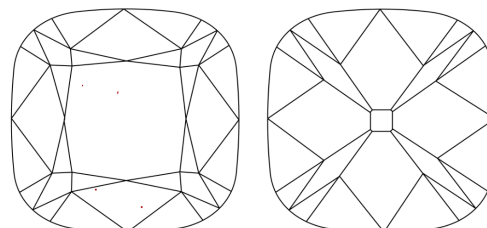


Sample Image Used

PROPORTIONS



CLARITY CHARACTERISTICS



KEY TO SYMBOLS

Red symbols indicate internal characteristics.
Green symbols indicate external characteristics.

COLOR

D E F G H I J Faint Very Light Light

CLARITY

FL	IF	VVS ¹⁻²	VS ¹⁻²	SI ¹⁻²	I ¹⁻³
Flawless	Internally Flawless	Very Very Slightly Included	Very Slightly Included	Slightly Included	Included

ADDITIONAL GRADING INFORMATION

Polish **EXCELLENT**
Symmetry **EXCELLENT**
Fluorescence **NONE**
Inscription(s) **IGI LG770636568**
Comments: This Laboratory Grown Diamond was created by Chemical Vapor Deposition (CVD) growth process. Type IIa



April 24, 2026
IGI Report No LG770636568
ANTIQUÉ CUSHION CUT
6.99 X 6.92 X 4.91 MM
2.01 CARATS
F
VVS 2
71%
64%
Slightly Thick To Thick (Faceted)
Large
EXCELLENT
EXCELLENT
NONE
IGI LG770636568
Comments: This Laboratory Grown Diamond was created by Chemical Vapor Deposition (CVD) growth process. Type IIa