



ELECTRONIC COPY

LG770636488
Report verification at igi.org



March 27, 2026

IGI Report Number **LG770636488**

Description **LABORATORY GROWN DIAMOND**

Shape and Cutting Style **KITE STEP CUT**

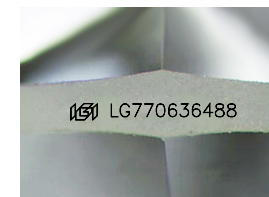
Measurements **10.58 X 5.81 X 3.60 MM**

GRADING RESULTS

Carat Weight **1.05 CARAT**

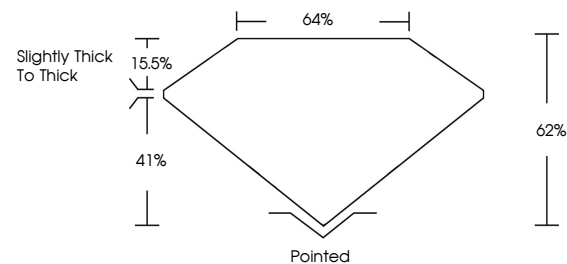
Color Grade **F**

Clarity Grade **VVS 2**

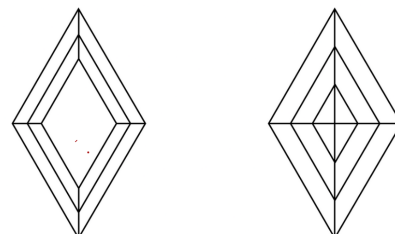


Sample Image Used

PROPORTIONS



CLARITY CHARACTERISTICS



KEY TO SYMBOLS

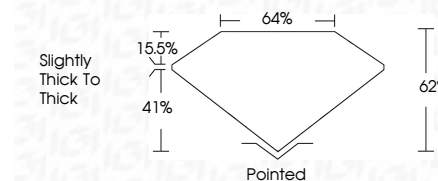
Red symbols indicate internal characteristics.
Green symbols indicate external characteristics.

COLOR

D E F G H I J Faint Very Light Light

CLARITY

FL	IF	VVS ¹⁻²	VS ¹⁻²	SI ¹⁻²	I ¹⁻³
Flawless	Internally Flawless	Very Very Slightly Included	Very Slightly Included	Slightly Included	Included



ADDITIONAL GRADING INFORMATION

Polish **EXCELLENT**

Symmetry **EXCELLENT**

Fluorescence **NONE**

Inscription(s) **IGI LG770636488**

Comments: This Laboratory Grown Diamond was created by Chemical Vapor Deposition (CVD) growth process. Type IIa



March 27, 2026
IGI Report No LG770636488
KITE STEP CUT

10.58 X 5.81 X 3.60 MM

Carat Weight 1.05 CARAT
Color Grade F
Clarity Grade VVS 2
Depth 62%
Table 41%
Girdle Slightly Thick To Thick

Culet Pointed
Polish EXCELLENT
Symmetry EXCELLENT
Fluorescence NONE
Inscription(s) IGI LG770636488

Comments: This Laboratory Grown Diamond was created by Chemical Vapor Deposition (CVD) growth process. Type IIa