



**ELECTRONIC COPY**

LG770635556  
Report verification at igi.org



January 28, 2026

IGI Report Number **LG770635556**

Description **LABORATORY GROWN DIAMOND**

Shape and Cutting Style **ROUND BRILLIANT**

Measurements **9.39 - 9.45 X 5.64 MM**

**GRADING RESULTS**

Carat Weight **3.04 CARATS**

Color Grade **D**

Clarity Grade **VS 1**

Cut Grade **IDEAL**

January 28, 2026  
IGI Report Number **LG770635556**  
Description **LABORATORY GROWN DIAMOND**  
Shape and Cutting Style **ROUND BRILLIANT**  
Measurements **9.39 - 9.45 X 5.64 MM**

**GRADING RESULTS**

Carat Weight **3.04 CARATS**

Color Grade **D**

Clarity Grade **VS 1**

Cut Grade **IDEAL**

**ADDITIONAL GRADING INFORMATION**

Polish **EXCELLENT**

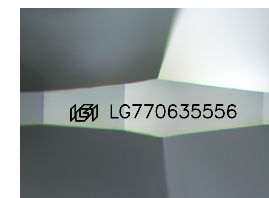
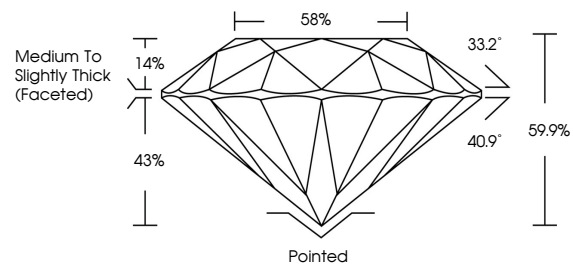
Symmetry **EXCELLENT**

Fluorescence **NONE**

Inscription(s) **IGI LG770635556**

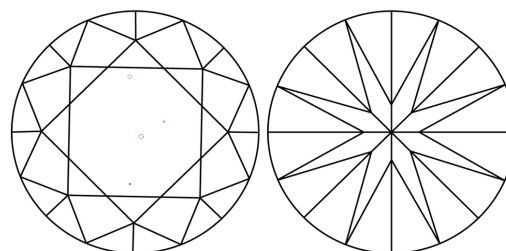
Comments: This Laboratory Grown Diamond was created by Chemical Vapor Deposition (CVD) growth process. Type IIa

**PROPORTIONS**



Sample Image Used

**CLARITY CHARACTERISTICS**



**KEY TO SYMBOLS**

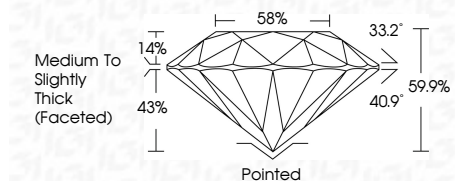
Red symbols indicate internal characteristics.  
Green symbols indicate external characteristics.

**COLOR**

D E F G H I J Faint Very Light Light

**CLARITY**

FL	IF	VS <sup>1-2</sup>	VS <sup>1-2</sup>	SI <sup>1-2</sup>	I <sup>1-3</sup>
Flawless	Internally Flawless	Very Very Slightly Included	Very Slightly Included	Slightly Included	Included



**ADDITIONAL GRADING INFORMATION**

Polish **EXCELLENT**

Symmetry **EXCELLENT**

Fluorescence **NONE**

Inscription(s) **IGI LG770635556**

Comments: This Laboratory Grown Diamond was created by Chemical Vapor Deposition (CVD) growth process. Type IIa



**IGI**



January 28, 2026  
IGI Report No LG770635556  
ROUND BRILLIANT  
3.04 CARATS  
D  
VS 1  
IDEAL  
59.9%  
58%  
Medium To Slightly Thick (Faceted)  
Pointed  
EXCELLENT  
EXCELLENT  
NONE  
NONE  
IGI LG770635556  
Comments: This Laboratory Grown Diamond was created by Chemical Vapor Deposition (CVD) growth process. Type IIa