



ELECTRONIC COPY

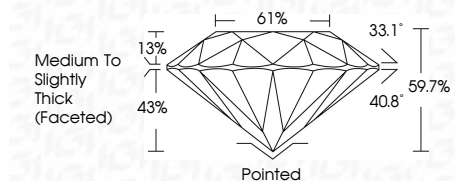
LG770635457
Report verification at igi.org



February 9, 2026
IGI Report Number LG770635457
Description LABORATORY GROWN DIAMOND
Shape and Cutting Style ROUND BRILLIANT
Measurements 11.09 - 11.15 X 6.63 MM

GRADING RESULTS

Carat Weight 5.03 CARATS
Color Grade E
Clarity Grade VVS 2
Cut Grade EXCELLENT

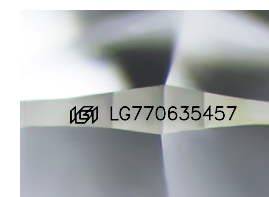


ADDITIONAL GRADING INFORMATION

Polish EXCELLENT
Symmetry EXCELLENT
Fluorescence NONE
Inscription(s) IGI LG770635457
Comments: This Laboratory Grown Diamond was created by Chemical Vapor Deposition (CVD) growth process. Type IIa

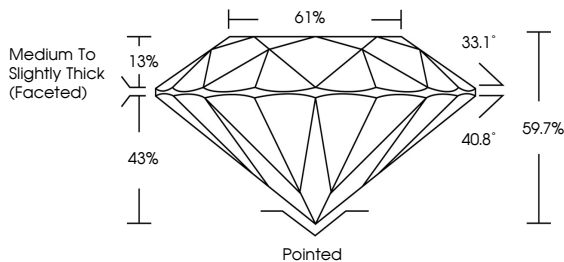


February 9, 2026
IGI Report No LG770635457
ROUND BRILLIANT
5.03 CARATS E
VVS 2 EXCELLENT
61%
Medium To Slightly Thick (Faceted)
Pointed EXCELLENT
Symmetry EXCELLENT
Fluorescence NONE
Inscription(s) IGI LG770635457
Comments: This Laboratory Grown Diamond was created by Chemical Vapor Deposition (CVD) growth process. Type IIa

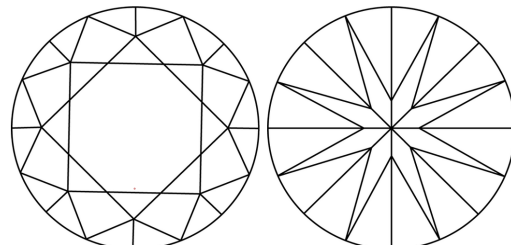


Sample Image Used

PROPORTIONS



CLARITY CHARACTERISTICS



KEY TO SYMBOLS

Red symbols indicate internal characteristics.
Green symbols indicate external characteristics.

COLOR

Table with color grades: D, E, F, G, H, I, J, Faint, Very Light, Light

CLARITY

Table with clarity grades: FL, IF, VVS 1-2, VS 1-2, SI 1-2, I 1-3, Flawless, Internally Flawless, Very Very Slightly Included, Very Slightly Included, Slightly Included, Included

