



**ELECTRONIC COPY**

LG770633905  
Report verification at igi.org



February 4, 2026

IGI Report Number **LG770633905**

Description **LABORATORY GROWN DIAMOND**

Shape and Cutting Style **PRINCESS CUT**

Measurements **7.54 X 7.45 X 5.24 MM**

**GRADING RESULTS**

Carat Weight **2.56 CARATS**

Color Grade **D**

Clarity Grade **VVS 2**

Polish **EXCELLENT**

Symmetry **EXCELLENT**

Fluorescence **NONE**

Inscription(s) **IGI LG770633905**

Comments: As Grown - No indication of post-growth treatment.

This Laboratory Grown Diamond was created by High Pressure High Temperature (HPHT) growth process.

Type II

IGI

February 4, 2026

IGI Report No LG770633905

PRINCESS CUT

7.54 X 7.45 X 5.24 MM

2.56 CARATS

D

VVS 2

70.3% 65%

Slightly Thick

Pointed

EXCELLENT

EXCELLENT

NONE

IGI LG770633905

As Grown - No indication of post-growth treatment.

This Laboratory Grown Diamond was created by High Pressure High Temperature (HPHT) growth process.

Type II

IGI

February 4, 2026

IGI Report No LG770633905

PRINCESS CUT

7.54 X 7.45 X 5.24 MM

2.56 CARATS

D

VVS 2

70.3% 65%

Slightly Thick

Pointed

EXCELLENT

EXCELLENT

NONE

IGI LG770633905

As Grown - No indication of post-growth treatment.

This Laboratory Grown Diamond was created by High Pressure High Temperature (HPHT) growth process.

Type II

IGI

February 4, 2026

IGI Report No LG770633905

PRINCESS CUT

7.54 X 7.45 X 5.24 MM

2.56 CARATS

D

VVS 2

70.3% 65%

Slightly Thick

Pointed

EXCELLENT

EXCELLENT

NONE

IGI LG770633905

As Grown - No indication of post-growth treatment.

This Laboratory Grown Diamond was created by High Pressure High Temperature (HPHT) growth process.

Type II

IGI

February 4, 2026

IGI Report No LG770633905

PRINCESS CUT

7.54 X 7.45 X 5.24 MM

2.56 CARATS

D

VVS 2

70.3% 65%

Slightly Thick

Pointed

EXCELLENT

EXCELLENT

NONE

IGI LG770633905

As Grown - No indication of post-growth treatment.

This Laboratory Grown Diamond was created by High Pressure High Temperature (HPHT) growth process.

Type II

IGI

February 4, 2026

IGI Report No LG770633905

PRINCESS CUT

7.54 X 7.45 X 5.24 MM

2.56 CARATS

D

VVS 2

70.3% 65%

Slightly Thick

Pointed

EXCELLENT

EXCELLENT

NONE

IGI LG770633905

As Grown - No indication of post-growth treatment.

This Laboratory Grown Diamond was created by High Pressure High Temperature (HPHT) growth process.

Type II

IGI

February 4, 2026

IGI Report No LG770633905

PRINCESS CUT

7.54 X 7.45 X 5.24 MM

2.56 CARATS

D

VVS 2

70.3% 65%

Slightly Thick

Pointed

EXCELLENT

EXCELLENT

NONE

IGI LG770633905

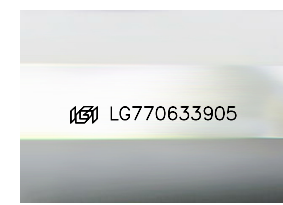
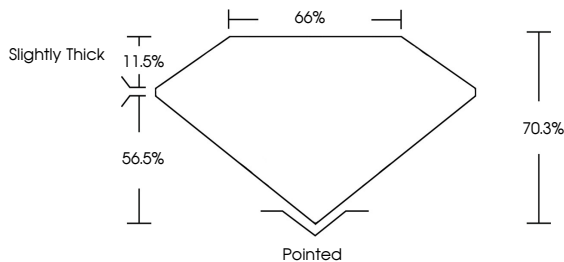
As Grown - No indication of post-growth treatment.

This Laboratory Grown Diamond was created by High Pressure High Temperature (HPHT) growth process.

Type II

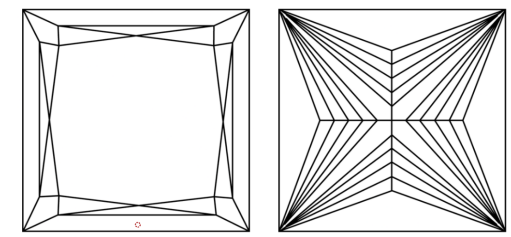
IGI

**PROPORTIONS**



Sample Image Used

**CLARITY CHARACTERISTICS**



**KEY TO SYMBOLS**

Red symbols indicate internal characteristics.  
Green symbols indicate external characteristics.

**COLOR**

D	E	F	G	H	I	J	Faint	Very Light	Light
---	---	---	---	---	---	---	-------	------------	-------

**CLARITY**

FL	IF	VVS <sup>1-2</sup>	VS <sup>1-2</sup>	SI <sup>1-2</sup>	I <sup>1-3</sup>
Flawless	Internally Flawless	Very Very Slightly Included	Very Slightly Included	Slightly Included	Included



February 4, 2026  
IGI Report No LG770633905  
PRINCESS CUT  
7.54 X 7.45 X 5.24 MM  
2.56 CARATS  
D  
VVS 2  
70.3% 65%  
Slightly Thick  
Pointed  
EXCELLENT  
EXCELLENT  
NONE  
IGI LG770633905

Comments: As Grown - No indication of post-growth treatment.  
This Laboratory Grown Diamond was created by High Pressure High Temperature (HPHT) growth process.  
Type II

IGI