



ELECTRONIC COPY

LG770631645
Report verification at igi.org



February 20, 2026

IGI Report Number **LG770631645**

Description **LABORATORY GROWN DIAMOND**

Shape and Cutting Style **ROUND MODIFIED BRILLIANT**

Measurements **6.97 - 6.97 X 4.08 MM**

GRADING RESULTS

Carat Weight **1.34 CARAT**

Color Grade **FANCY PINK**

Clarity Grade **VVS 2**

February 20, 2026

IGI Report Number **LG770631645**

Description **LABORATORY GROWN DIAMOND**

Shape and Cutting Style **ROUND MODIFIED BRILLIANT**

Measurements **6.97 - 6.97 X 4.08 MM**

GRADING RESULTS

Carat Weight **1.34 CARAT**

Color Grade **FANCY PINK**

Clarity Grade **VVS 2**

ADDITIONAL GRADING INFORMATION

Polish **EXCELLENT**

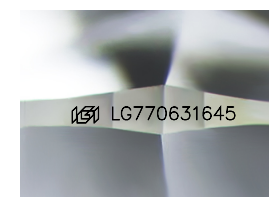
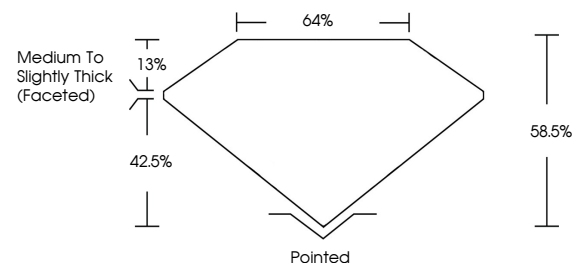
Symmetry **EXCELLENT**

Fluorescence **SLIGHT**

Inscription(s) **IGI LG770631645**

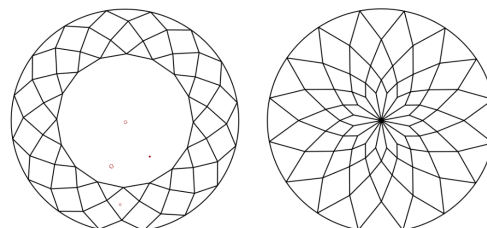
Comments: This Laboratory Grown Diamond was created by Chemical Vapor Deposition (CVD) growth process. Indications of post-growth treatment.

PROPORTIONS



Sample Image Used

CLARITY CHARACTERISTICS



KEY TO SYMBOLS

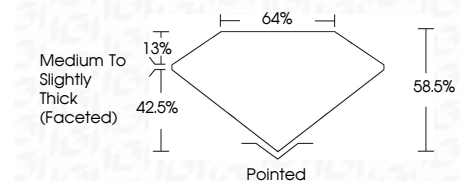
Red symbols indicate internal characteristics.
Green symbols indicate external characteristics.

COLOR

D E F G H I J Faint Very Light Light

CLARITY

FL	IF	VVS ¹⁻²	VS ¹⁻²	SI ¹⁻²	I ¹⁻³
Flawless	Internally Flawless	Very Very Slightly Included	Very Slightly Included	Slightly Included	Included



ADDITIONAL GRADING INFORMATION

Polish **EXCELLENT**

Symmetry **EXCELLENT**

Fluorescence **SLIGHT**

Inscription(s) **IGI LG770631645**

Comments: This Laboratory Grown Diamond was created by Chemical Vapor Deposition (CVD) growth process. Indications of post-growth treatment.



February 20, 2026
IGI Report No LG770631645
ROUND MODIFIED BRILLIANT
6.97 - 6.97 X 4.08 MM
1.34 CARAT
FANCY PINK
VVS 2
68.6%
64%
Medium to Slightly Thick (Faceted)
Pointed
EXCELLENT
EXCELLENT
SLIGHT
IGI LG770631645

Comments: This Laboratory Grown Diamond was created by Chemical Vapor Deposition (CVD) growth process. Indications of post-growth treatment.