



ELECTRONIC COPY

LG770630897
Report verification at igi.org



February 18, 2026

IGI Report Number **LG770630897**

Description **LABORATORY GROWN DIAMOND**

Shape and Cutting Style **ROUND BRILLIANT**

Measurements **7.51 - 7.56 X 4.51 MM**

GRADING RESULTS

Carat Weight **1.55 CARAT**

Color Grade **G**

Clarity Grade **VS 1**

Cut Grade **IDEAL**

February 18, 2026

IGI Report Number **LG770630897**

Description **LABORATORY GROWN DIAMOND**

Shape and Cutting Style **ROUND BRILLIANT**

Measurements **7.51 - 7.56 X 4.51 MM**

GRADING RESULTS

Carat Weight **1.55 CARAT**

Color Grade **G**

Clarity Grade **VS 1**

Cut Grade **IDEAL**

ADDITIONAL GRADING INFORMATION

Polish **EXCELLENT**

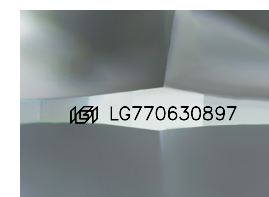
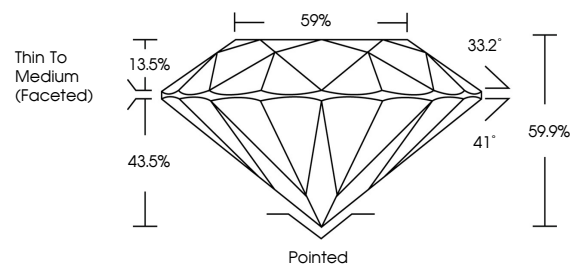
Symmetry **EXCELLENT**

Fluorescence **NONE**

Inscription(s) **IGI LG770630897**

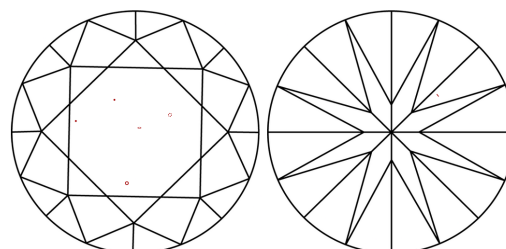
Comments: This Laboratory Grown Diamond was created by Chemical Vapor Deposition (CVD) growth process. Type IIa

PROPORTIONS



Sample Image Used

CLARITY CHARACTERISTICS



KEY TO SYMBOLS

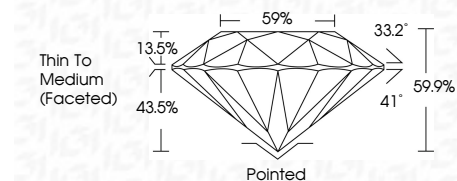
Red symbols indicate internal characteristics.
Green symbols indicate external characteristics.

COLOR

D E F G H I J Faint Very Light Light

CLARITY

FL	IF	VS ¹⁻²	VS ¹⁻²	SI ¹⁻²	I ¹⁻³
Flawless	Internally Flawless	Very Very Slightly Included	Very Slightly Included	Slightly Included	Included



ADDITIONAL GRADING INFORMATION

Polish **EXCELLENT**

Symmetry **EXCELLENT**

Fluorescence **NONE**

Inscription(s) **IGI LG770630897**

Comments: This Laboratory Grown Diamond was created by Chemical Vapor Deposition (CVD) growth process. Type IIa



February 18, 2026
IGI Report No LG770630897
ROUND BRILLIANT

1.55 CARAT
Color Grade **G**
Clarity Grade **VS 1**
Depth **43.5%**
Table **59%**
Girdle **Thin To Medium (Faceted)**

Culet **Pointed**
Polish **EXCELLENT**
Symmetry **EXCELLENT**
Fluorescence **NONE**
Inscription(s) **IGI LG770630897**

Comments: This Laboratory Grown Diamond was created by Chemical Vapor Deposition (CVD) growth process. Type IIa