



ELECTRONIC COPY

LG770630643
Report verification at igi.org



February 18, 2026
IGI Report Number LG770630643
Description LABORATORY GROWN DIAMOND
Shape and Cutting Style ROUND CORNERED RECTANGULAR MODIFIED BRILLIANT
Measurements 7.37 X 4.71 X 2.98 MM
GRADING RESULTS
Carat Weight 1.02 CARAT
Color Grade LIGHT YELLOW
Clarity Grade VS 1

February 18, 2026
IGI Report Number LG770630643
Description LABORATORY GROWN DIAMOND
Shape and Cutting Style ROUND CORNERED RECTANGULAR MODIFIED BRILLIANT
Measurements 7.37 X 4.71 X 2.98 MM

GRADING RESULTS

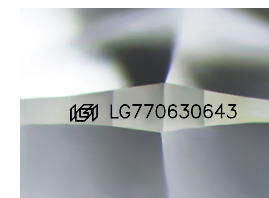
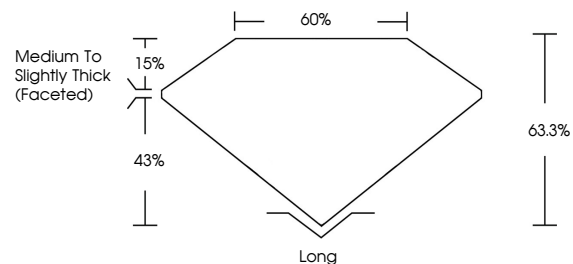
Carat Weight 1.02 CARAT
Color Grade LIGHT YELLOW
Clarity Grade VS 1

ADDITIONAL GRADING INFORMATION

Polish EXCELLENT
Symmetry EXCELLENT
Fluorescence NONE
Inscription(s) LG770630643

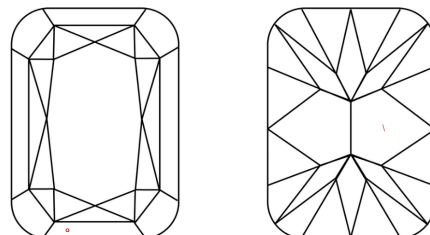
Comments: This Laboratory Grown Diamond was created by Chemical Vapor Deposition (CVD) growth process.

PROPORTIONS



Sample Image Used

CLARITY CHARACTERISTICS



KEY TO SYMBOLS

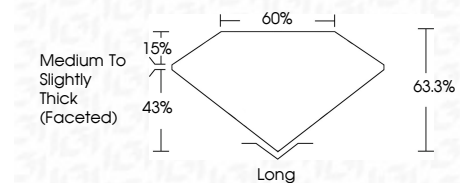
Red symbols indicate internal characteristics.
Green symbols indicate external characteristics.

COLOR

D E F G H I J Faint Very Light Light

CLARITY

FL IF VS 1-2 VS 2-3 SI 1-2 I 1-3
Flawless Internally Flawless Very Very Slightly Included Very Slightly Included Slightly Included Included



ADDITIONAL GRADING INFORMATION

Polish EXCELLENT
Symmetry EXCELLENT
Fluorescence NONE
Inscription(s) LG770630643
Comments: This Laboratory Grown Diamond was created by Chemical Vapor Deposition (CVD) growth process.



February 18, 2026
IGI Report No. LG770630643
ROUND CORNERED RECT. MODIFIED BRILLIANT
7.37 X 4.71 X 2.98 MM
1.02 CARAT
LIGHT YELLOW
VS 1
63.3%
60%
Medium to Slightly Thick (Faceted)
Long
EXCELLENT
EXCELLENT
NONE
None
Inscription(s) LG770630643
Comments: This Laboratory Grown Diamond was created by Chemical Vapor Deposition (CVD) growth process.