



**ELECTRONIC COPY**

LG770630590  
Report verification at igi.org



February 18, 2026  
IGI Report Number **LG770630590**  
Description **LABORATORY GROWN DIAMOND**  
Shape and Cutting Style **ROUND BRILLIANT**  
Measurements **7.36 - 7.40 X 4.47 MM**

**GRADING RESULTS**

Carat Weight **1.50 CARAT**  
Color Grade **G**  
Clarity Grade **VS 2**  
Cut Grade **EXCELLENT**

February 18, 2026  
IGI Report Number **LG770630590**  
Description **LABORATORY GROWN DIAMOND**  
Shape and Cutting Style **ROUND BRILLIANT**  
Measurements **7.36 - 7.40 X 4.47 MM**

**GRADING RESULTS**

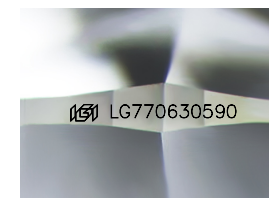
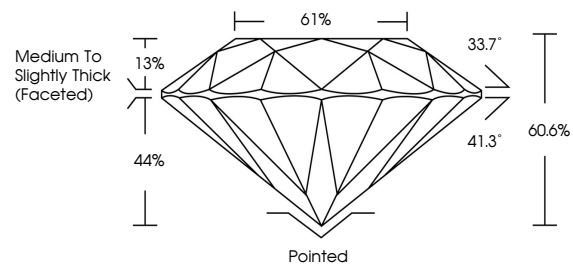
Carat Weight **1.50 CARAT**  
Color Grade **G**  
Clarity Grade **VS 2**  
Cut Grade **EXCELLENT**

**ADDITIONAL GRADING INFORMATION**

Polish **EXCELLENT**  
Symmetry **EXCELLENT**  
Fluorescence **NONE**  
Inscription(s) **IGI LG770630590**

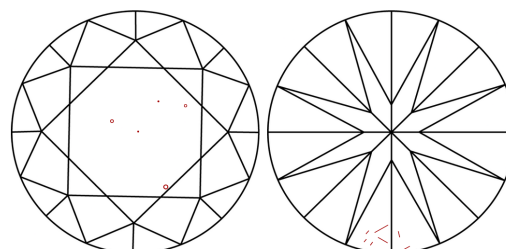
Comments: This Laboratory Grown Diamond was created by Chemical Vapor Deposition (CVD) growth process. Type IIa

**PROPORTIONS**



Sample Image Used

**CLARITY CHARACTERISTICS**



**KEY TO SYMBOLS**

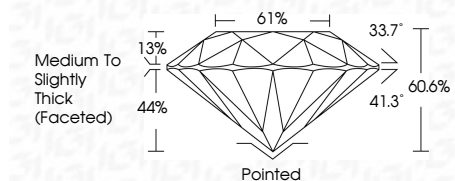
Red symbols indicate internal characteristics.  
Green symbols indicate external characteristics.

**COLOR**

D E F G H I J Faint Very Light Light

**CLARITY**

FL	IF	VS <sup>1-2</sup>	VS <sup>1-2</sup>	SI <sup>1-2</sup>	I <sup>1-3</sup>
Flawless	Internally Flawless	Very Very Slightly Included	Very Slightly Included	Slightly Included	Included



**ADDITIONAL GRADING INFORMATION**

Polish **EXCELLENT**  
Symmetry **EXCELLENT**  
Fluorescence **NONE**  
Inscription(s) **IGI LG770630590**  
Comments: This Laboratory Grown Diamond was created by Chemical Vapor Deposition (CVD) growth process. Type IIa



February 18, 2026  
IGI Report No LG770630590  
ROUND BRILLIANT  
1.50 CARAT  
Color Grade G  
Clarity Grade VS 2  
Depth 60.6%  
Table 61%  
Girdle Medium To Slightly Thick (Faceted)  
Culet Pointed  
Polish EXCELLENT  
Symmetry EXCELLENT  
Fluorescence NONE  
Inscription(s) IGI LG770630590  
Comments: This Laboratory Grown Diamond was created by Chemical Vapor Deposition (CVD) growth process. Type IIa