



**ELECTRONIC COPY**

LG770627834  
Report verification at igi.org



February 13, 2026

IGI Report Number **LG770627834**

Description **LABORATORY GROWN DIAMOND**

Shape and Cutting Style **ROUND BRILLIANT**

Measurements **8.15 - 8.19 X 4.94 MM**

**GRADING RESULTS**

Carat Weight **2.04 CARATS**

Color Grade **FANCY INTENSE PINK**

Clarity Grade **VVS 2**

Cut Grade **IDEAL**

February 13, 2026  
IGI Report Number **LG770627834**  
Description **LABORATORY GROWN DIAMOND**  
Shape and Cutting Style **ROUND BRILLIANT**  
Measurements **8.15 - 8.19 X 4.94 MM**

**GRADING RESULTS**

Carat Weight **2.04 CARATS**

Color Grade **FANCY INTENSE PINK**

Clarity Grade **VVS 2**

Cut Grade **IDEAL**

**ADDITIONAL GRADING INFORMATION**

Polish **EXCELLENT**

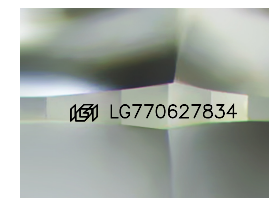
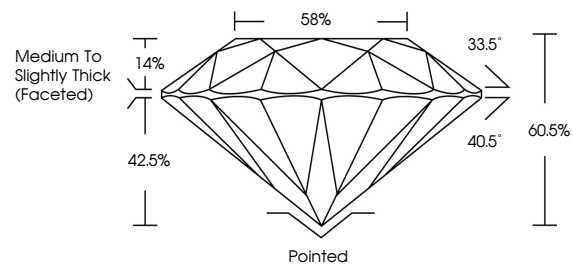
Symmetry **EXCELLENT**

Fluorescence **SLIGHT**

Inscription(s) **LG770627834**

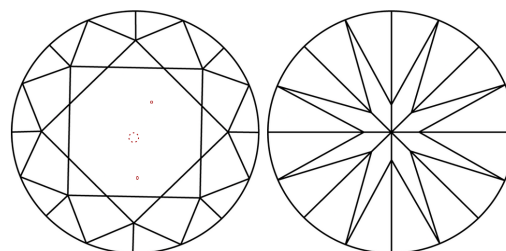
Comments: This Laboratory Grown Diamond was created by Chemical Vapor Deposition (CVD) growth process.  
Indications of post-growth treatment.

**PROPORTIONS**



Sample Image Used

**CLARITY CHARACTERISTICS**



**KEY TO SYMBOLS**

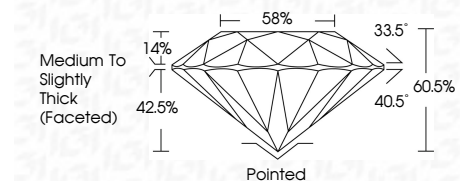
Red symbols indicate internal characteristics.  
Green symbols indicate external characteristics.

**COLOR**

D E F G H I J Faint Very Light Light

**CLARITY**

FL	IF	VVS <sup>1-2</sup>	VS <sup>1-2</sup>	SI <sup>1-2</sup>	I <sup>1-3</sup>
Flawless	Internally Flawless	Very Very Slightly Included	Very Slightly Included	Slightly Included	Included



**ADDITIONAL GRADING INFORMATION**

Polish **EXCELLENT**

Symmetry **EXCELLENT**

Fluorescence **SLIGHT**

Inscription(s) **LG770627834**

Comments: This Laboratory Grown Diamond was created by Chemical Vapor Deposition (CVD) growth process.  
Indications of post-growth treatment.



February 13, 2026  
IGI Report No **LG770627834**  
**ROUND BRILLIANT**  
**8.15 - 8.19 X 4.94 MM**  
**2.04 CARATS**  
**FANCY INTENSE PINK**  
Carat Weight  
Color Grade  
Clarity Grade  
Cut Grade  
Depth  
Table  
Girdle  
Medium To Slightly Thick (Faceted)  
Culet  
Polish  
Symmetry  
Fluorescence  
Inscription(s)  
**EXCELLENT**  
**EXCELLENT**  
**VVS 2**  
**IDEAL**  
**60.5%**  
**58%**  
**Pointed**  
**EXCELLENT**  
**EXCELLENT**  
**SLIGHT**  
**LG770627834**  
Comments: This Laboratory Grown Diamond was created by Chemical Vapor Deposition (CVD) growth process.  
Indications of post-growth treatment.