



ELECTRONIC COPY

LG770627500
Report verification at igi.org



February 18, 2026

IGI Report Number **LG770627500**

Description **LABORATORY GROWN DIAMOND**

Shape and Cutting Style **CUT CORNERED
RECTANGULAR MODIFIED
BRILLIANT**

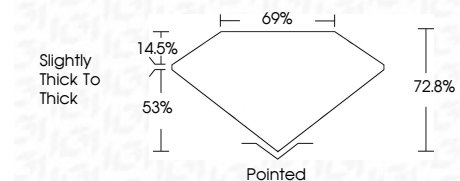
Measurements **8.26 X 5.95 X 4.33 MM**

GRADING RESULTS

Carat Weight **2.05 CARATS**

Color Grade **H**

Clarity Grade **SI 1**



ADDITIONAL GRADING INFORMATION

Polish **EXCELLENT**

Symmetry **EXCELLENT**

Fluorescence **NONE**

Inscription(s) **IGI LG770627500**

Comments: This Laboratory Grown Diamond was created by Chemical Vapor Deposition (CVD) growth process. Type IIa



February 18, 2026	IGI Report No LG770627500	CUT CORNERED RECT. MODIFIED BRILLIANT	8.26 X 5.95 X 4.33 MM	2.05 CARATS	H	SI 1	72.8%	14.5%	53%	Slightly Thick To Thick	Pointed	EXCELLENT	EXCELLENT	NONE	IGI LG770627500
<p>Comments: This Laboratory Grown Diamond was created by Chemical Vapor Deposition (CVD) growth process. Type IIa</p>															

LABORATORY GROWN DIAMOND REPORT

February 18, 2026

IGI Report Number **LG770627500**

Description **LABORATORY GROWN DIAMOND**

Shape and Cutting Style **CUT CORNERED RECTANGULAR
MODIFIED BRILLIANT**

Measurements **8.26 X 5.95 X 4.33 MM**

GRADING RESULTS

Carat Weight **2.05 CARATS**

Color Grade **H**

Clarity Grade **SI 1**

ADDITIONAL GRADING INFORMATION

Polish **EXCELLENT**

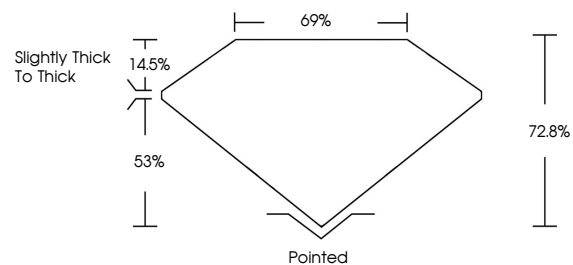
Symmetry **EXCELLENT**

Fluorescence **NONE**

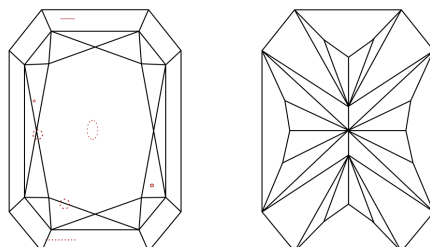
Inscription(s) **IGI LG770627500**

Comments: This Laboratory Grown Diamond was created by Chemical Vapor Deposition (CVD) growth process. Type IIa

PROPORTIONS

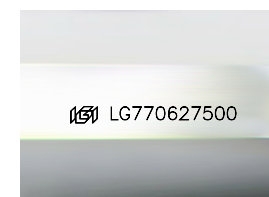


CLARITY CHARACTERISTICS



KEY TO SYMBOLS

Red symbols indicate internal characteristics.
Green symbols indicate external characteristics.



Sample Image Used

COLOR

D E F G H I J Faint Very Light Light

CLARITY

FL	IF	VS ¹⁻²	VS ¹⁻²	SI ¹⁻²	I ¹⁻³
Flawless	Internally Flawless	Very Very Slightly Included	Very Slightly Included	Slightly Included	Included

