



ELECTRONIC COPY

LG770626300
Report verification at igi.org



February 16, 2026

IGI Report Number **LG770626300**

Description **LABORATORY GROWN DIAMOND**

Shape and Cutting Style **EMERALD CUT**

Measurements **13.14 X 9.30 X 6.09 MM**

GRADING RESULTS

Carat Weight **7.58 CARATS**

Color Grade **E**

Clarity Grade **VVS 2**

February 16, 2026

IGI Report Number **LG770626300**

Description **LABORATORY GROWN DIAMOND**

Shape and Cutting Style **EMERALD CUT**

Measurements **13.14 X 9.30 X 6.09 MM**

GRADING RESULTS

Carat Weight **7.58 CARATS**

Color Grade **E**

Clarity Grade **VVS 2**

ADDITIONAL GRADING INFORMATION

Polish **EXCELLENT**

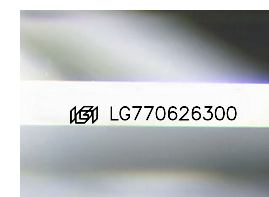
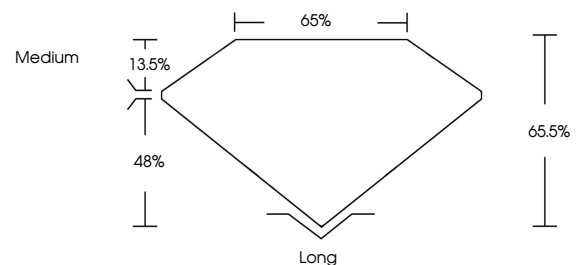
Symmetry **EXCELLENT**

Fluorescence **NONE**

Inscription(s) **IGI LG770626300**

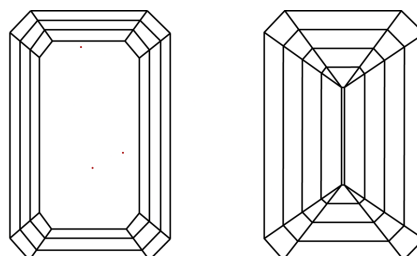
Comments: This Laboratory Grown Diamond was created by Chemical Vapor Deposition (CVD) growth process. Type IIa

PROPORTIONS



Sample Image Used

CLARITY CHARACTERISTICS



KEY TO SYMBOLS

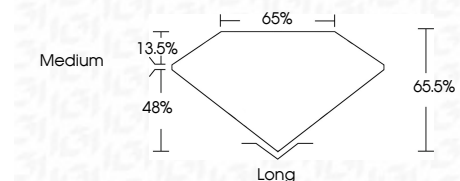
Red symbols indicate internal characteristics.
Green symbols indicate external characteristics.

COLOR

D E F G H I J Faint Very Light Light

CLARITY

FL	IF	VVS ¹⁻²	VS ¹⁻²	SI ¹⁻²	I ¹⁻³
Flawless	Internally Flawless	Very Very Slightly Included	Very Slightly Included	Slightly Included	Included



ADDITIONAL GRADING INFORMATION

Polish **EXCELLENT**

Symmetry **EXCELLENT**

Fluorescence **NONE**

Inscription(s) **IGI LG770626300**

Comments: This Laboratory Grown Diamond was created by Chemical Vapor Deposition (CVD) growth process. Type IIa



IGI



February 16, 2026
IGI Report No LG770626300
EMERALD CUT

7.58 CARATS
E

13.14 X 9.30 X 6.09 MM

Carat Weight
Color Grade
Clarity Grade
Depth
Table
Girdle
Medium

Long
EXCELLENT
EXCELLENT
NONE
IGI LG770626300

Culet
Polish
Symmetry
Fluorescence
Inscription(s)

Comments: This Laboratory Grown Diamond was created by Chemical Vapor Deposition (CVD) growth process. Type IIa