



ELECTRONIC COPY

LG770626069
Report verification at igi.org



February 16, 2026
IGI Report Number **LG770626069**
Description **LABORATORY GROWN DIAMOND**
Shape and Cutting Style **ROUND BRILLIANT**
Measurements **7.64 - 7.68 X 4.55 MM**
GRADING RESULTS
Carat Weight **1.65 CARAT**
Color Grade **FANCY VIVID PINK**
Clarity Grade **SI 1**
Cut Grade **EXCELLENT**

February 16, 2026
IGI Report Number **LG770626069**
Description **LABORATORY GROWN DIAMOND**
Shape and Cutting Style **ROUND BRILLIANT**
Measurements **7.64 - 7.68 X 4.55 MM**

GRADING RESULTS

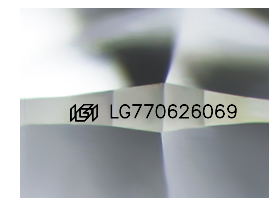
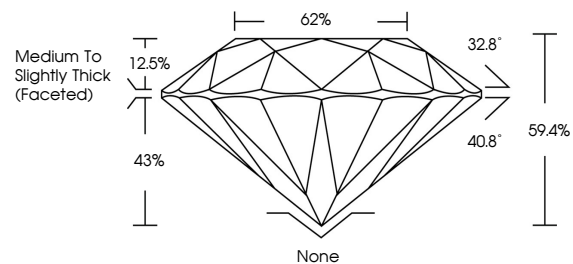
Carat Weight **1.65 CARAT**
Color Grade **FANCY VIVID PINK**
Clarity Grade **SI 1**
Cut Grade **EXCELLENT**

ADDITIONAL GRADING INFORMATION

Polish **VERY GOOD**
Symmetry **EXCELLENT**
Fluorescence **SLIGHT**
Inscription(s) **IGI LG770626069**

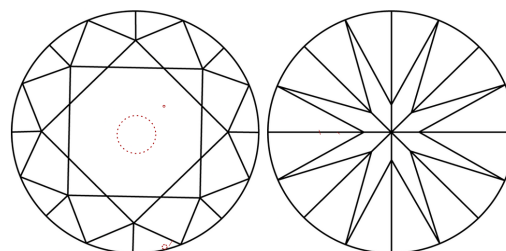
Comments: This Laboratory Grown Diamond was created by Chemical Vapor Deposition (CVD) growth process.
Indications of post-growth treatment.

PROPORTIONS



Sample Image Used

CLARITY CHARACTERISTICS



KEY TO SYMBOLS

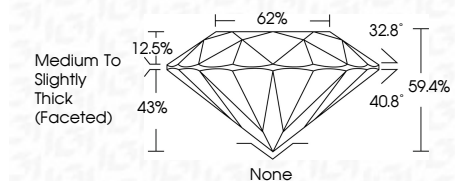
Red symbols indicate internal characteristics.
Green symbols indicate external characteristics.

COLOR

D E F G H I J Faint Very Light Light

CLARITY

FL	IF	VS ¹⁻²	VS ¹⁻²	SI ¹⁻²	I ¹⁻³
Flawless	Internally Flawless	Very Very Slightly Included	Very Slightly Included	Slightly Included	Included



ADDITIONAL GRADING INFORMATION

Polish **VERY GOOD**
Symmetry **EXCELLENT**
Fluorescence **SLIGHT**
Inscription(s) **IGI LG770626069**
Comments: This Laboratory Grown Diamond was created by Chemical Vapor Deposition (CVD) growth process.
Indications of post-growth treatment.



IGI



February 16, 2026
IGI Report No **LG770626069**
ROUND BRILLIANT
7.64 - 7.68 X 4.55 MM
Carat Weight **1.65 CARAT**
Color Grade **FANCY VIVID PINK**
Clarity Grade **SI 1**
Cut Grade **EXCELLENT**
Depth **59.4%**
Table **62%**
Girdle **Medium To Slightly Thick (Faceted)**
Culet **None**
Polish **VERY GOOD**
Symmetry **EXCELLENT**
Fluorescence **SLIGHT**
Inscription(s) **IGI LG770626069**
Comments: This Laboratory Grown Diamond was created by Chemical Vapor Deposition (CVD) growth process.
Indications of post-growth treatment.